

MOUNTING KIT

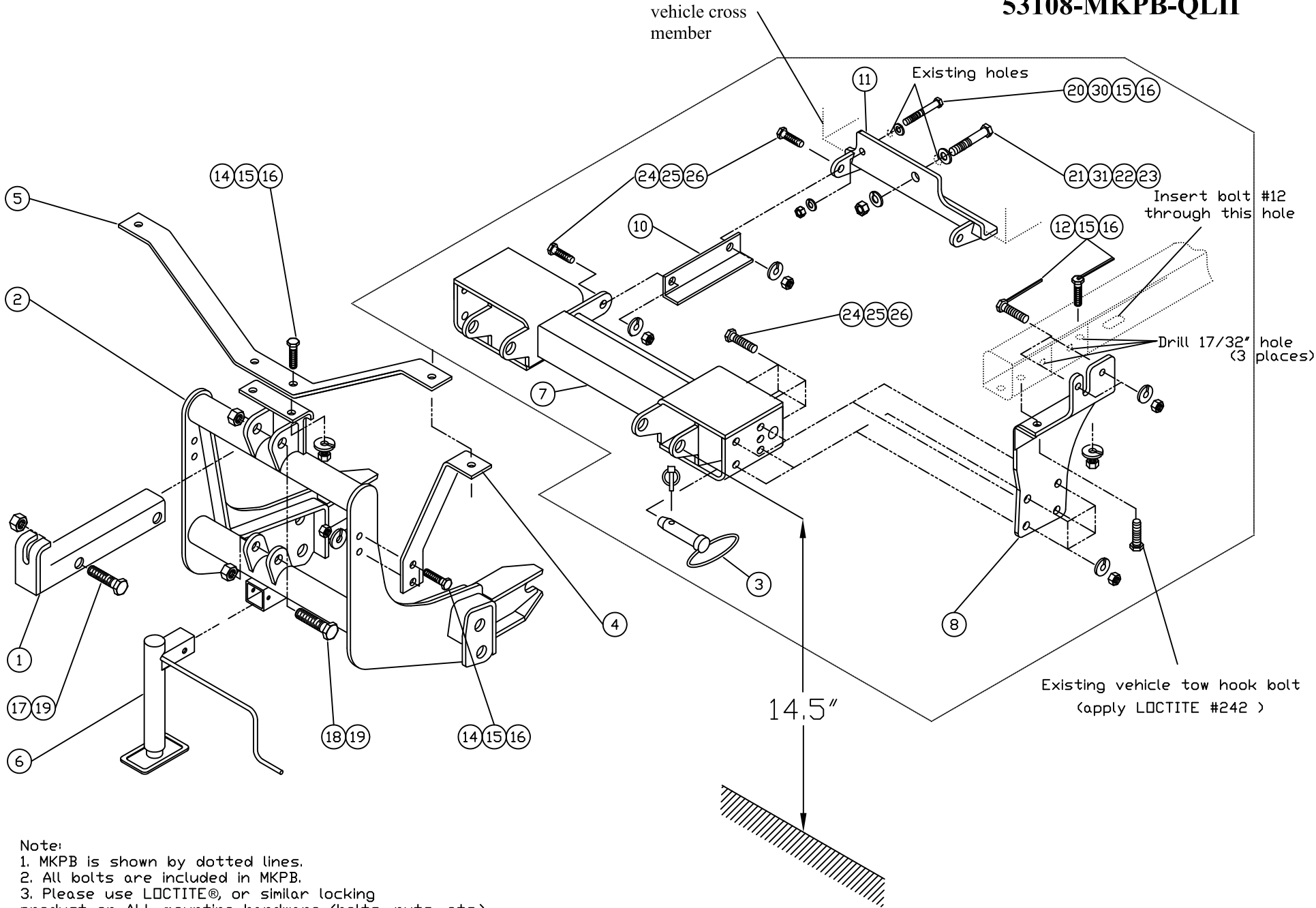
53108-MKPB

Titan (Nissan) 4x4 (2003-2013)

(Note: For the snowplow lights this kit requires: 800037 (or 800037AXV) Light kit, 767054 Adapter (vehicle's headlamp bulb 9005 (HB3) and 9006 (HB4)) and Turn Signal Relay Kit 800038)

Note: This vehicle, as received from the manufacturer, has a very low ride height. Suspension modifications may be required in order to achieve sufficient ground clearance to install a snowplow.

MOUNTING KIT 53108-MKPB-QLII



Arctic Equipment Manufacturing Corporation
Mounting kit 53108-MKPB

53108-MKPB R06
INST0084

Mounting Kit 53108-MKPB-QLII				
Item	Part #	Description	MKPB-QLII	QLII-MKB
1	50069-C-GA	Lift Channel Galvanized		1
2	53170-D-GA	Lift Frame, QUIK*LINK ® II Galvanized		1
3	52348-M	Mounting Pin, Ass'y		2
4	52208-B-GA	Light Brace Galvanized		2
5	52209-B-GA	Light Antler Galvanized		1
6	52373-M	Jack Assembly		1
7	53109-D	Spreader Bar	1	
8	53111-01-B	Mounting Bracket Driver Side	1	
9*	53111-02-B	Mounting Bracket Curb Side	1	
10	53113-A	Thrust Arm Angle	2	
11	53114-B	Thrust Arm Plate	1	
12	52320-A	½" with welded handle 14"	6	
14	HH-00972-090	1/2-20x1.1/2 UNF Hex Head Cap screw	6	
15	HH-00457-001	1/2 Lock washer	13	
16	HH-00460-002	1/2-20 Hex nut	13	
17	HH-00972-149	3/4-16x2.1/2 UNF Hex Head Cap screw	1	
18	HH-00972-153	3/4-16x3.1/2 UNF Hex Head Cap screw	2	
19	HH-00973-007	3/4-16 Lock nut	3	

Mounting Kit 53108-MKPB-QLII				
Item	Part #	Description	MKPB-QLII	QLII-MKB
20	HH-00972-101	1/2-20x4.1/2 UNF Hex Head Cap screw	1	
21	HH-00972-156	3/4-16X4.1/2 UNF Hex Head Cap screw	1	
22	HH-00457-008	3/4 Lock washer	1	
23	HH-00460-007	3/4-16 UNF Hex Head Cap screw	1	
24	HH-00972-128	5/8-18x1.1/2 UNF Hex Head Cap screw	12	
25	HH-00457-003	5/8 Lock washer	12	
26	HH-00460-001	5/8-18 Hex Nut	12	
27*	HH-00293-006	1/4"x1" UNC Hex Head Cap screw	4	
28*	HH-00457-006	1/4" Lock washer	4	
29*	HH-00294-001	1/4" Hex Nut	4	
30	HH-00341-006	1/2" Flatwasher	1	
31	HH-00341-009	3/4" Flatwasher	1	

QUIK*LINK is a trademark of Arctic Equipment Manufacturing Corporation

Note: * These items are not shown on the drawing.

GENERAL

Customer must be aware of following:

Arctic Equipment Manufacturing Corporation (Arctic) does not assume liability for damage to your motor vehicle resulting from the attachment or use of an Arctic snowplow. The purchaser assumes all vehicle risk associated with the attachment and operation of this snowplow.

The Arctic snowplow you purchase must be used only on vehicles equipped with the manufacturer's snow plow preparation

packages. Snow plowing without the original plow preparation package may damage your vehicle. The added weight may impair the operation and control of your vehicle. Snow plowing with a vehicle not recommended for that purpose by the manufacturer may void your new vehicle warranty. If your vehicle is not equipped with an original snow plow preparation package, additional equipment may be necessary before snow plowing. The installation of such parts however is not a full substitute for the original equipment snowplow preparation package. Please consult your vehicle and snowplow dealers prior to the purchase and installation of the snowplow.

Before drilling any holes in the firewall or frame, move brake lines, fuel lines and/or electrical wiring from the path of the drill. Brake and fuel lines must also be clear of any fasteners.

All bolts should be installed from the inside of the truck frame so that the lock washers and nuts are accessible for re-tightening (where possible).

If a slotted hole in the truck frame is utilized, then a flat washer must be used under the bolt head. If a flat washer is used under a lock washer use LOCTITE #242. Also use this LOCTITE #242 if existing (vehicle) bolts and nuts are used.

General order of installation:

- install all components (mounting bracket, thrust arm and spreader bar) and all fasteners finger tight (snug) through existing holes,
- drill necessary holes and
- tighten all hardware.

After first use, re-tighten all mounting bolts, thereafter check mounting bolt tightness periodically and at the start of the season.



Before proceeding, read instructions carefully and familiarize yourself with the components and hardware.

INSTALLATION INSTRUCTIONS

1. Remove the splash pan. Remove tow hooks. If a blockerbeam is installed see last page.
2. Install the mounting brackets (8)(9) using existing tow hook bolt. Apply LOCTITE #242 on the bolt.
3. Using existing holes (three) in the mounting brackets (8)(9) as guides drill 17/32" holes in the frame. Install 1/2" bolts with welded handle (12), 1/2" lockwashers (15) and 1/2" nuts (16).
4. Install the thrust arm plate (11) to the vehicle cross member using 3/4" x 4 1/2" bolt (21), 3/4" flatwasher (31), 3/4" lock washer

(22), 3/4" hex nut (23) and 1/2" x 4 1/2" (20), 1/2" flatwasher (30), 1/2" lock washer (15) and 1/2" nut (16).

5. Fasten spreader bar (7) to the mounting brackets (8)(9) using 5/8"x 1 1/2" bolt (24), 5/8" lock washer (25) and 5/8" hex nut (26).
6. Attach the thrust arm angle (10). One side of the thrust arm attaches to the lug on the spreader bar (7) and the second side to the lug on the thrust arm plate (11) using 5/8" x 1 1/2" bolt (24), 5/8" lock washer (25) and 5/8" nut (26). (Note the ends of the thrust arm angle (10) must be against the spreader bar (7) and the thrust arm plate (11)).
7. Torque all fasteners using torque chart.
8. Slide the lift frame (2) inside of spreader bar (7). Insert mounting pin (3) in top holes of spreader bar (7).
9. Fasten the light antler (5) to the top of the lift frame (2) using 1/2"x1 1/2" bolt (14), lock washer (15), 1/2" nut (16). Do not tighten.
 Fasten the light brace (4) to both sides of the lift frame (2), using 1/2"x1 1/2" bolt (14), lock washer (15), 1/2" nut (16). Do not tighten.
 Install plow lamps so that the stud is through the light antler (5) and light brace (4).
10. Torque all fasteners according to torque chart.
11. Fasten the lift channel (1) and the power unit M673F to the lift frame (2) using 3/4"x3 1/2" bolts (18) and 3/4" locknut (19). Use 3/4"x 2 1/2" bolt (17) and 3/4" locknut (19) to attach lift cylinder or the power unit M673F to the lift channel (1).

TORQUE CHART (FT. LB.)		
SIZE	GRADE 5 BOLT 	GRADE 8 BOLT 
1/4 - 28	8	11
5/16 - 24	15	22
3/8 - 24	28	40
7/16 - 20	44	63
1/2 - 20	69	97
5/8 - 18	138	195
3/4 - 16	241	341
<small>Note: Torque values are for plated bolts only</small>		

NOTE: *Do not over tighten as this assembly must be able to pivot.*

12. Use 1/4"x1" bolt (27), 1/4"lock washer (28) and 1/4" hex nut (29) to fasten blade guides to plow.
13. Return any unused items to the customer so that the vehicle can be returned to its original condition if the snowplow is removed.
14. See separate installation instructions for the hydraulic pump, wiring and controls.



Picture #1



Picture #2

1. Using a cut off wheel grind a weld that holds a blocker beam bracket to the vehicle frame, and cut a blocker beam cross tube approx. 1.5" from the end.
2. See picture #2—removed piece.



Picture #3



Picture #4



Picture #5

3. A mounting bracket installed—Picture # 3 & #4.
4. A thrust arms installed—Picture #5.