

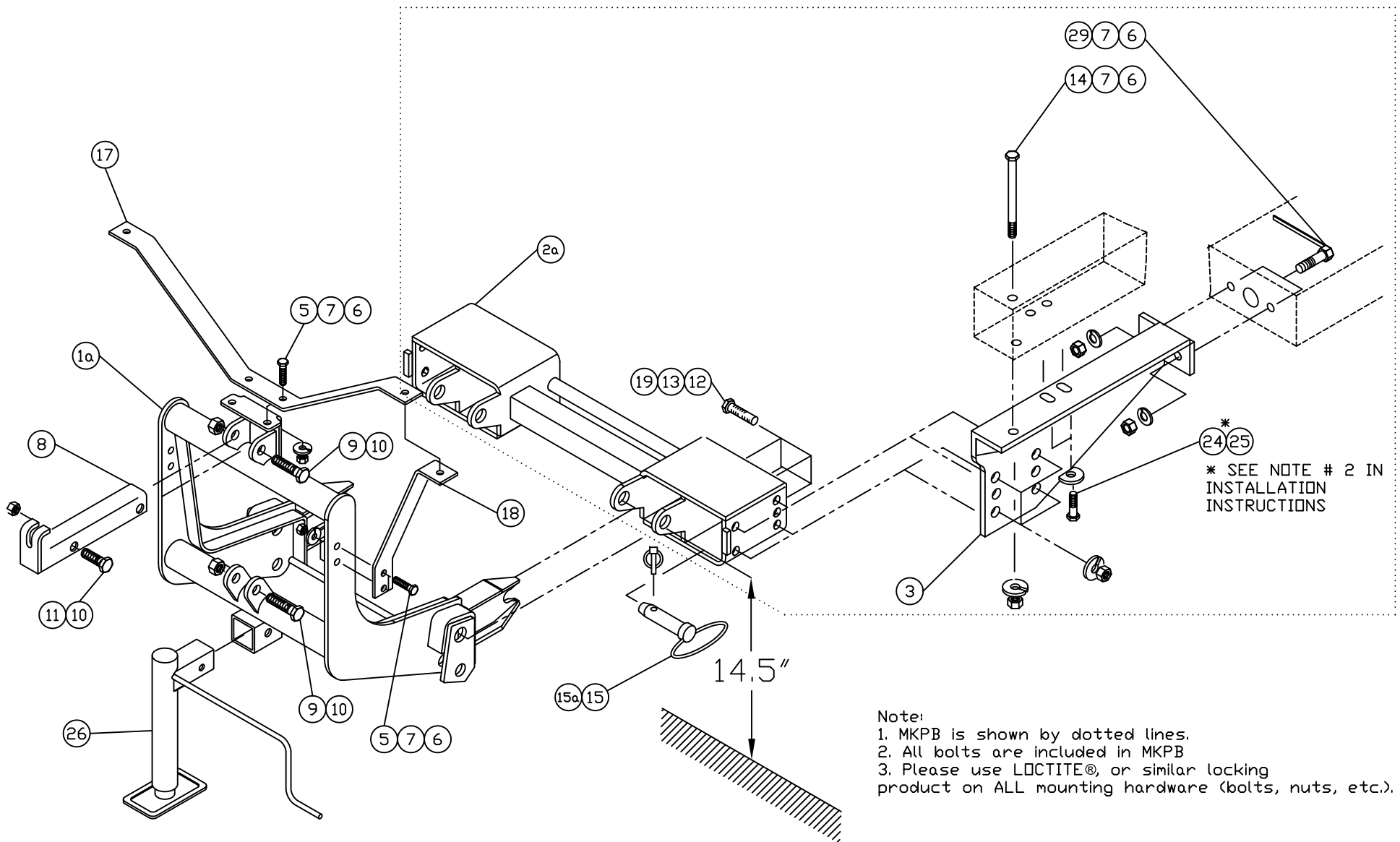
MOUNTING KIT

52371-MKPB

Toyota Tundra (4x4) 2000-2006

(Note: For the snowplow lights this kit requires: 800067 or 800037AXV Light kit, Adapter Kit is not required)

MOUNTING KIT 52371-MKPB-QLII



Arctic Equipment Manufacturing Corporation
Mounting kit 52371-MKPB

52371-MKPB R11
INST0029

Mounting Kit 52371-MKPB											
Item	Part #	Description	MKPB	MKPB-QLII	QL-MKB	QLII-MKB	QLII-HI	QLII-HI-DLC			
1*	52162-C	Lift Frame			1						
1a	53170-D-GA	Lift Frame, QUIK*LINK ® II Galvanized				1					
1b*	53171-D-GA	Lift Frame, QUIK*LINK ® II-Hi boy Galvanized					1				
2*	52310-D	Spreader Bar	1								
2a	52364-C	Spreader Bar QLII		1							
3	52372-01-C	Mounting Bracket Driver Side	1								
4*	52372-02-C	Mounting Bracket Curb Side	1								
5	HH-00972-090	½"x1 1/2" UNF Hex Cap screw	6								
6	HH-00460-002	½" UNF Hex Nut	12								
7	HH-00457-001	½" Lock washer	12								
8	50069-C-GA	Lift Arm Channel Galvanized							1		
8a*	52612-B-GA	Lift Channel (2" cylinder) Galvanized									1
9	HH-00972-153	3/4"x3.1/2" UNF Cap screw	2								
10	HH-00973-007	3/4" UNF Thin Collar Locknut	3								
11	HH-00972-149	3/4"x2.1/2" UNF Cap screw	1								
12	HH-00460-001	5/8" UNF Hex nut	8								
13	HH-00457-003	5/8" Lock washer	8								

Arctic Equipment Manufacturing Corporation
Mounting kit 52371-MKPB

52371-MKPB R11
INST0029

Mounting Kit 52371-MKPB									
Item	Part #	Description	MKPB	MKPB-QLII	QL-MKB	QLII-MKB	QLII-HI	QLII-HI-DLC	
14	HH-00972-103	½" x 5 ½" Bolt UNF	2						
15	WA-34704-M	Mounting Pin, QLI, Ass'y			2				
15a	52348-M	Mounting Pin Ass'y					2		
17	52209-B-GA	Light Antler Galvanized			1				
18	52208-B-GA	Light Brace Galvanized			2				
19	HH-00972-131	5/8"x2.1/4" Cap screw	8						
20*	HH-00457-006	1/4" Lock washer	4						
21*	HH-00341-002	1/4" Flat washer	4						
22*	HH-00294-001	1/4" Hex Nut	4						
23*	HH-00293-006	1/4"x1" UNC Cap screw	4						
24	HH-00931-055	M12x 1.25 x 35 mm Cap screw	4						
25	52387-01-A	Flat washer	4						
26	52373-M	Jack Assembly					1		
27*	50999-B	Blade guides			2				
28*	HH-00972-155	¾" x 4" UNF Cap screw							2
29	52575-A	½" bolt with welded handle	4						

QUIK*LINK is a trademark of Arctic Equipment Manufacturing Corporation

Note: * These items are not shown on the drawing.

GENERAL

Customer must be aware of following:

Arctic Equipment Manufacturing Corporation (Arctic) does not assume liability for damage to your motor vehicle resulting from the attachment or use of an Arctic snowplow. The purchaser assumes all vehicle risk associated with the attachment and operation of this snowplow.

The Arctic snowplow you purchase must be used only on vehicles equipped with the manufacturer's snow plow preparation package. Snow plowing without the original plow preparation package may damage your vehicle. The added weight may impair the operation and control of your vehicle. Snow plowing with a vehicle not recommended for that purpose by the manufacturer may void your new vehicle warranty. If your vehicle is not equipped with an original snow plow preparation package, additional equipment may be necessary before snow plowing. Please consult your vehicle and snowplow dealers prior to the purchase and installation of the snowplow. The installation of such parts however is not a full substitute for the original equipment snowplow preparation package.

Before drilling any holes in the firewall or frame, move brake lines, fuel lines and/or electrical wiring from the path of the drill. Brake and fuel lines must also be clear of any fasteners.

All bolts should be installed from the inside of the truck frame so that the lock washers and nuts are accessible for re tightening.

If a slotted hole in the truck frame is utilized, then a flat washer must be used under the bolt head. If a flat washer is used under a lock washer use LOCTITE #242. Use LOCTITE #242 if existing (vehicle) bolts and nuts are used.

General order of installation:

- install all components (mounting bracket and spreader bar) and all fasteners finger tight (snug) through existing holes,
- drill necessary holes and
- tighten all hardware.

After first use, re tighten all mounting bolts, thereafter check mounting bolt tightness periodically.



Before proceeding, read instructions carefully and familiarize yourself with the components and hardware.

INSTALLATION INSTRUCTIONS

1. Do Not Remove Bumper, but remove splash guard and tow hooks.
2. Fasten mounting brackets (3)(4) to vehicle frame using bolts M12 x 1.25(24) and flat washers (25). LOCTITE #242 is to be applied on these two bolts. Tow hook or lug needs to be removed. (If tow hook is attached to the frame of vehicle use bolts supplied or if only lug is attached use existing vehicle bolts).
3. In the front of mounting plate drill 17/32" hole through the truck frame (2 holes) using the hole in the mounting bracket (3)(4) as a guide. Install ½"x 5 1/2" bolt (14), lock washer (7) and hex nut (6).
4. In the back of mounting plate drill 17/32" hole in the truck frame (2 places) using the holes in the mounting bracket (3)(4) as a guide. Install ½" bolt (29), lock washer (7) and hex nut (6).
5. Install and fasten spreader bar (2a) using 5/8"x 2 1/4" bolt (19), lock washer (13) and hex nut (12).
6. Tighten all hardware.
7. Install lift frame (1a), (1b). Slide inside of spreader bar (2a). Insert mounting pin (15a) in the top holes of the spreader bar (2a).
8. Install light antler (17) and light brace (18) using ½"x1 1/2" bolts (5), ½" hex nut (6) and ½" lock washer (7). Fasten light antler (17) to top of the lift frame (1) and light brace (18) to side of lift frame (1). Install plow lamps, not shown, so that stud of plow lamps is through light antler (17) and light brace (18).
9. Torque all fasteners according to torque chart.
10. Install lift channel (8) and lift cylinder (or power unit) on lift frame 1A. Use 3/4"x3.1/2" bolts (9) and 3/4" thin collar locknut (10) at lift frame (1) connection. Use 3/4"x2.1/2" bolt (11) and 3/4" thin collar locknut (10) at cylinder and lift channel (8) connection.

NOTE: Do not tighten, as this assembly must be able to pivot.

11. Use 1/4"x1" bolt (23), 1/4" flat washer (21), 1/4" lock washer (20) and 1/4" hex nut (22) to fasten blade guides to plow.

TORQUE CHART (FT. LB.)		
SIZE	GRADE 5 BOLT 	GRADE 8 BOLT 
$\frac{1}{4}$ - 28	8	11
$\frac{5}{16}$ - 24	15	22
$\frac{3}{8}$ - 24	28	40
$\frac{7}{16}$ - 20	44	63
$\frac{1}{2}$ - 20	69	97
$\frac{5}{8}$ - 18	138	195
$\frac{3}{4}$ - 16	241	341
Note: Torque values are for plated bolts only		