

MPX troubleshooting flowchart

(Except Dodge 2500/3500/4500/5500)

Front Installation

(module installed in the front)

For troubleshooting on Dodge trucks

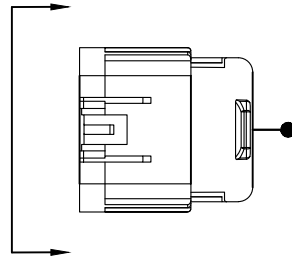
Click here

Important Note:

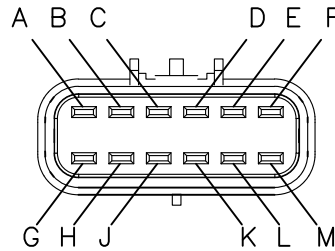
- Use **Power Probe III** tool to troubleshoot the MPX system.
- <https://www.youtube.com/watch?v=FuzfCO1A1Vw> – Link for Power Probe III tool instructions
- Update the modular box by updating tool (53707-N) if it was installed before 2017.
- See last page for more information on updating the modular box.

Controller Harness (Male Pins)

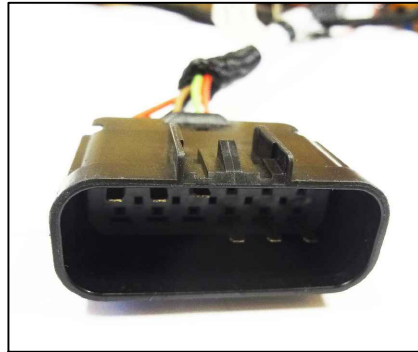
(FRONT VIEW)



PIN #	COLOR	FUNCTION
A	RED	POS (+) to RING
B	BLACK	GROUND
C	BROWN	PUMP (SOLENOID)
D	CAVITY PLUG	-
E	CAVITY PLUG	-
F	CAVITY PLUG	-
G	CAVITY PLUG	-
H	CAVITY PLUG	-
J	CAVITY PLUG	-
K	WHITE	CONTROLLER SIGNAL
L	GREEN	CONTROLLER SIGNAL
M	RED/WHITE	POS (+) SWITCHED POWER (COMING FROM IGNITION SOURCE)



PIN FACE
(FRONT VIEW)

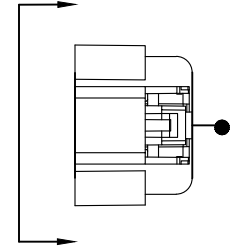


Plug A

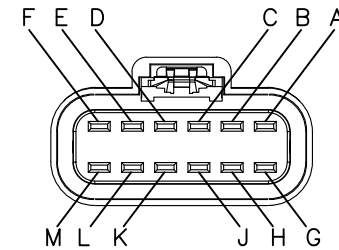
Link for removing & reinstalling pins from female plug
<https://www.youtube.com/watch?v=VAmp0lQlegs>

Light Harness (Female Pins)

(FRONT VIEW)



PIN #	COLOR	FUNCTION
A	RED	POS (+) to RING
B	BLACK	GROUND
C	GREEN/YELLOW	TRIGGER
D	YELLOW/RED	DRIVERS SIDE HIGH BEAM
E	GREEN/RED	DRIVERS SIDE LOW BEAM
F	WHITE/RED	COMMON
G	VIOLET	DRIVERS SIDE TURN
H	PINK	CURB SIDE TURN
J	GREY	RUN/PARK
K	CAVITY PLUG	-
L	CAVITY PLUG	-
M	CAVITY PLUG	-



PIN FACE
(FRONT VIEW)



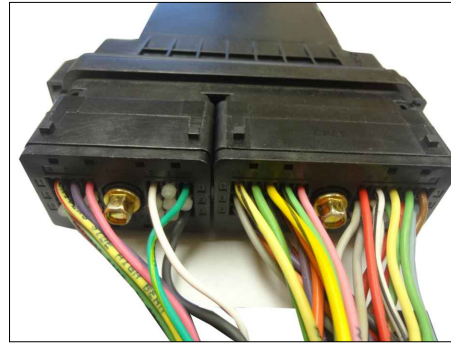
53708-02-N
 Insert this pin into Plug B for testing
 12V using Power Probe III tool



Plug B

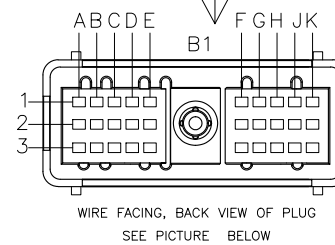
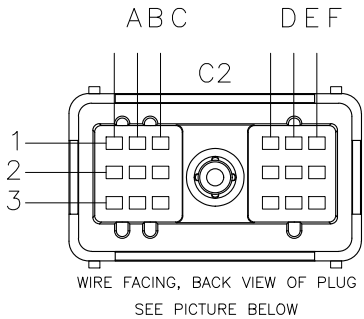
Link for removing & reinstalling pins from male plug
<https://www.youtube.com/watch?v=BB6tE096HkQ>

MPX Lift Frame Harness (53627-MPX)



Small Connector

Big Connector

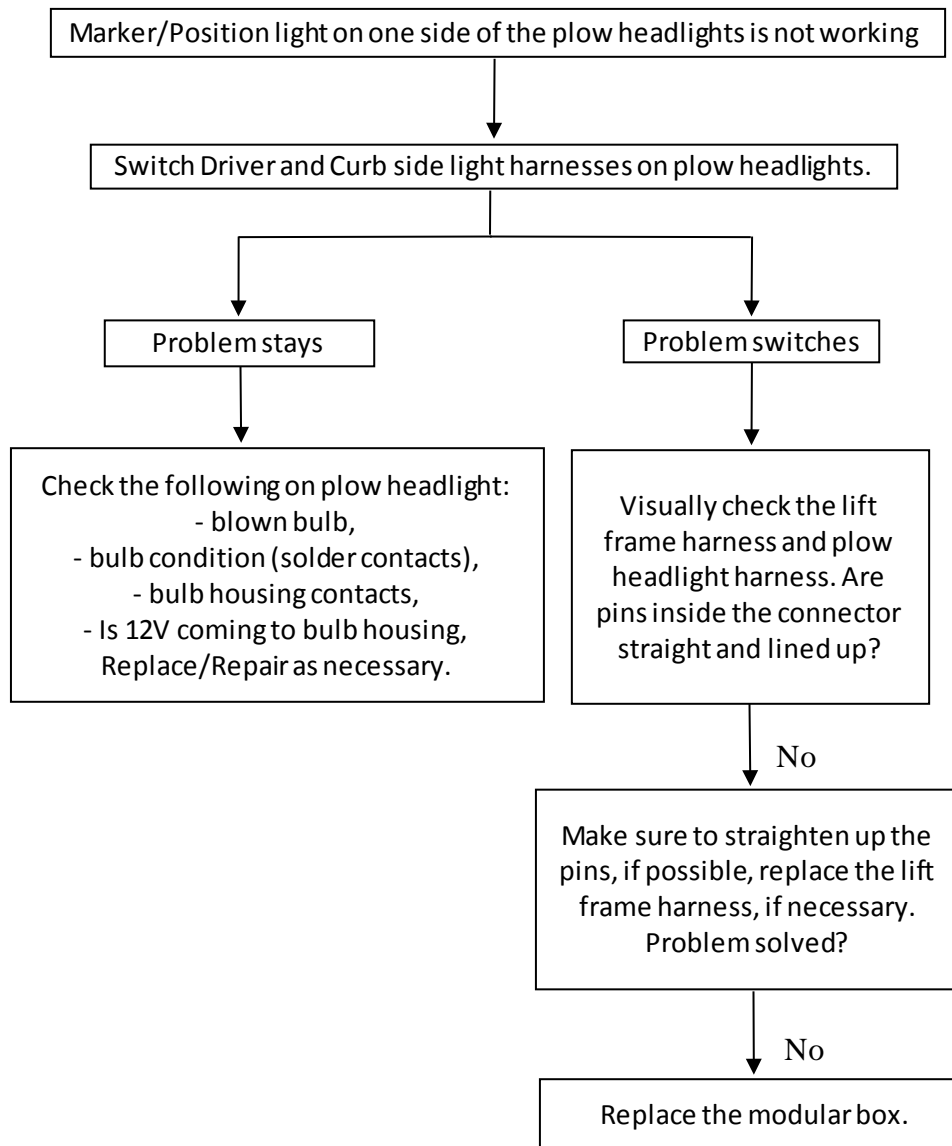


PIN #	COLOR	FUNCTION	INPUT/OUTPUT
A1	YELLOW/RED	DRIVERS SIDE HIGH BEAM	TRUCK INPUT
A2	GREEN/RED	DRIVERS SIDE LOW BEAM	TRUCK INPUT
A3	CAVITY PLUG	-	-
B1	VIOLET#1	TURN DRIVERS SIDE	TRUCK INPUT
B2	GREY#1	RUN/PARK	TRUCK INPUT
B3	CAVITY PLUG	-	-
C1	PINK#1	TURN CURB SIDE	TRUCK INPUT
C2	CAVITY PLUG	-	-
C3	CAVITY PLUG	-	-
D1	WHITE/RED	COMMON	TRUCK INPUT
D2	CAVITY PLUG	-	-
D3	CAVITY PLUG	-	-
E1	CAVITY PLUG	-	-
E2	CAVITY PLUG	-	-
E3	CAVITY PLUG	-	-
F1	GREEN/YELLOW	TRIGGER	TO TRUCK RELAY
F2	CAVITY PLUG	-	-
F3	BLACK#1	GROUND	TRUCK INPUT

PIN #	COLOR	FUNCTION	INPUT/OUTPUT
A1	YELLOW/BLK#2	DRIVERS SIDE HIGH BEAM	PLOW OUTPUT
A2	GREY	VALVE	-
A3	VIOLET	VALVE	-
B1	GREEN/BLK#2	DRIVERS SIDE LOW BEAM	PLOW OUTPUT
B2	CAVITY PLUG	-	-
B3	ORANGE	VALVE	-
C1	YELLOW/BLK#1	CURB SIDE HIGH BEAM	PLOW OUTPUT
C2	BLACK	GROUND	TRUCK INPUT
C3	RED/WHITE	POS (+) IGNITION IN	TRUCK INPUT
D1	GREEN/BLK#1	CURB SIDE LOW BEAM	PLOW OUTPUT
D2	ORANGE/BLK#1	CURB SIDE COMMON	PLOW OUTPUT
D3	ORANGE/BLK#2	DRIVERS SIDE COMMON	PLOW OUTPUT
E1	PINK#2	CURB SIDE TURN	PLOW OUTPUT
E2	VIOLET#2	DRIVERS SIDE TURN	PLOW OUTPUT
E3	BLACK	GROUND	TRUCK INPUT
F1	RED	VALVE	-
F2	GREY/BLK#2	DRIVERS SIDE PARK	PLOW OUTPUT
F3	GREY/BLK#1	CURB SIDE PARK	PLOW OUTPUT
G1	WHITE/BLACK	VALVE	-
G2	WHITE-A	CONTROLLER WIRE	CONTROLLER INPUT
G3	CAVITY PLUG	-	-
H1	YELLOW	VALVE	-
H2	GREEN-B	CONTROLLER WIRE	CONTROLLER INPUT
H3	CAVITY PLUG	-	-
J1	GREEN	VALVE	-
J2	RED#1	POS (+)	TRUCK INPUT
J3	RED#2	POS (+)	TRUCK INPUT
K1	BROWN	SOLENOID	TO SOLENOID
K2	BLUE	VALVE	-
K3	CAVITY PLUG	-	-

Click on the link below to refer to the specific troubleshooting step:

- Marker/Position light on one side of plow headlights is not working.
- Marker/Position lights on both the sides of plow headlights are not working
- High beam / Low beam on one side of the plow headlights is not working.
- High beam on both the sides of plow headlights are not working.
- Low beam on both the sides of plow headlights are not working.
- Turn Signal on Driver side of the plow headlight is not working.
- Turn Signal on Curb side of the plow headlight is not working.
- Plow does not operate and lights on the plow are not working.
- Plow does not operate.
- Lights do not transfer to the plow.
- Lights on the truck and the plow work at the same time.
- Individual functions on the plow are not working.
- Controller lights keep on changing.



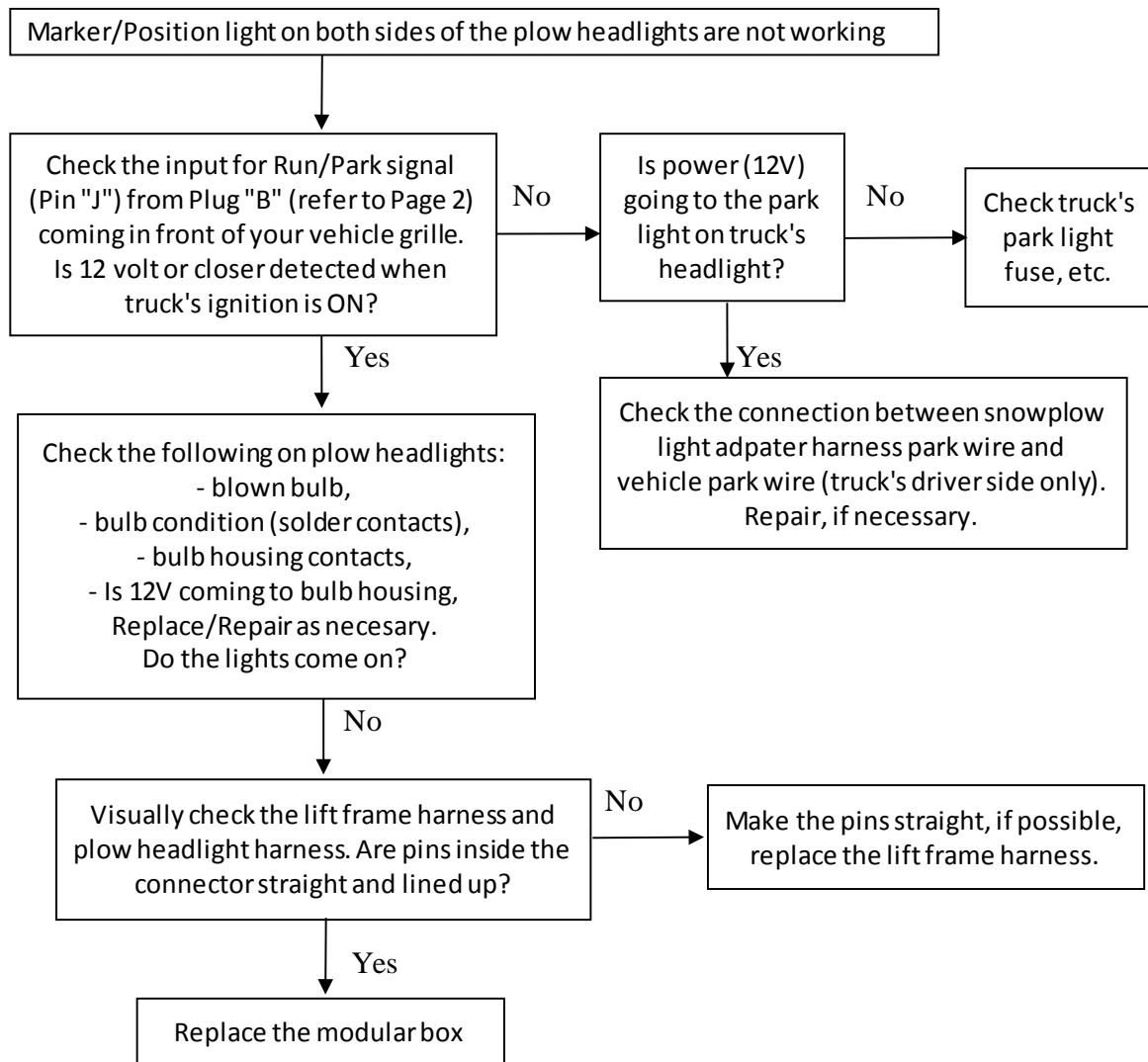
Restart truck's ignition after every step of troubleshooting.

Click on the link https://www.youtube.com/watch?v=NwhY_zgbx6A to watch the video of this specific troubleshooting step.

Link for 800084 headlights: <https://www.youtube.com/watch?v=LJlgbdwop8Q>

Link for 800085 headlights: <https://www.youtube.com/watch?v=fn09WLSG-vI>

Link for 800086 headlights: <https://www.youtube.com/watch?v=sA7AxDIYgwc>



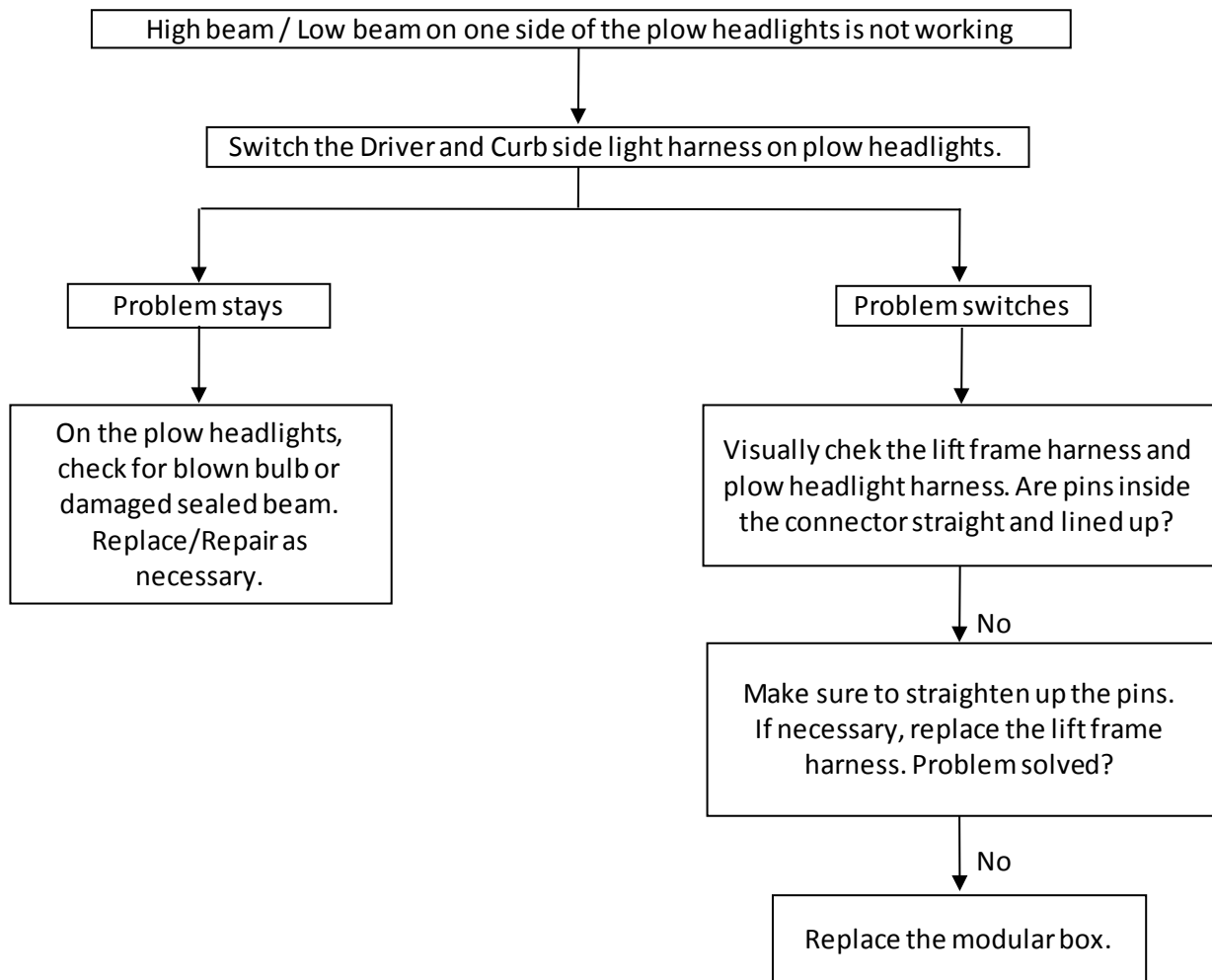
Restart truck's ignition after every step of troubleshooting.

Click on the link <https://www.youtube.com/watch?v=u7a5Dg LHmiU> to watch the video of this specific troubleshooting step.

Link for 800084 headlights: <https://www.youtube.com/watch?v=LJlgbdwop8Q>

Link for 800085 headlights: <https://www.youtube.com/watch?v=fn09WLSG-vI>

Link for 800086 headlights: <https://www.youtube.com/watch?v=sA7AxDIYgwc>



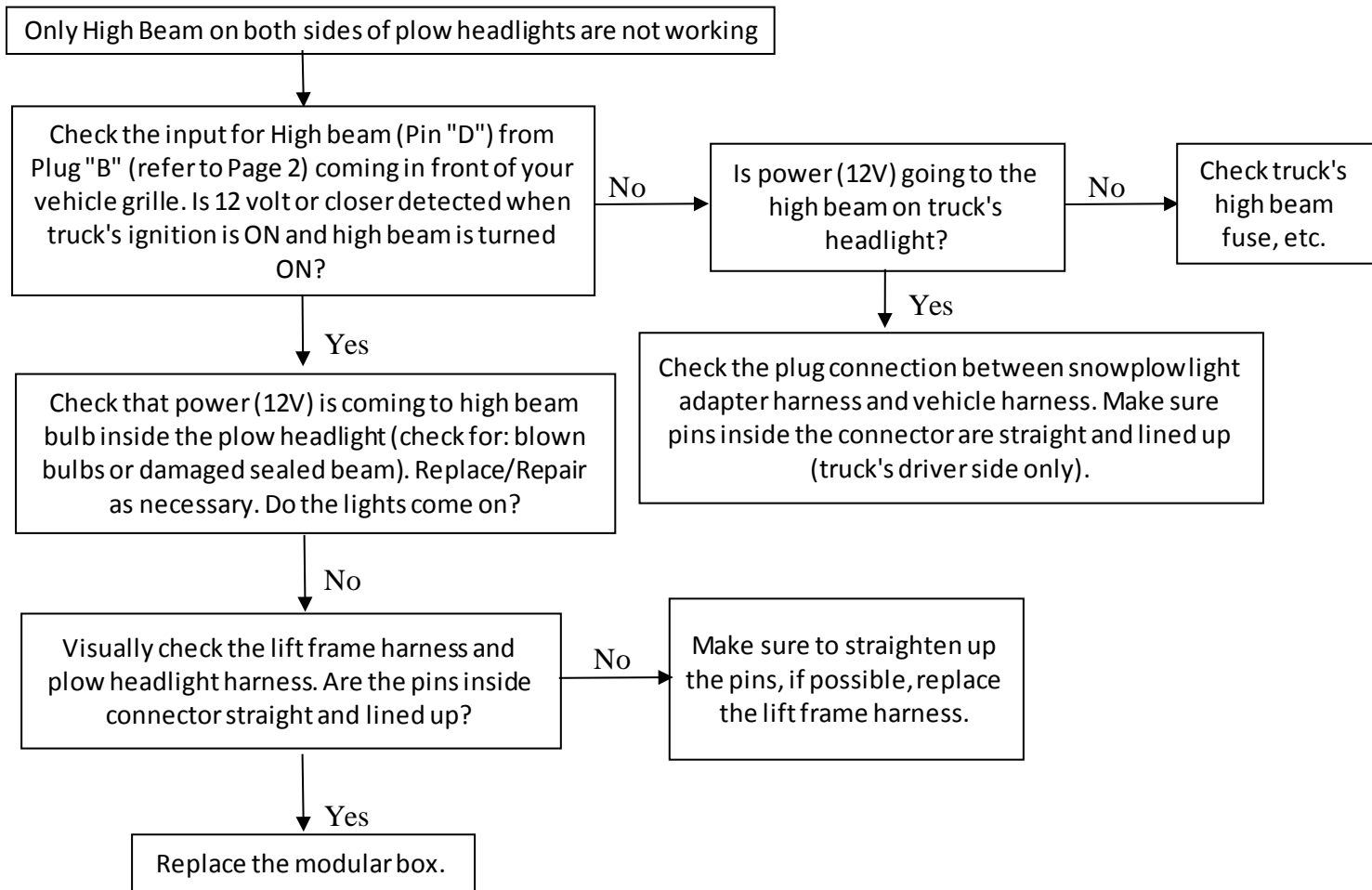
Restart truck's ignition after every step of troubleshooting.

Click on the link <https://www.youtube.com/watch?v=c4yPVrKAKQo> to watch the video of this specific troubleshooting step.

Link for 800084 headlights: <https://www.youtube.com/watch?v=LJlgbdwop8Q>

Link for 800085 headlights: <https://www.youtube.com/watch?v=fn09WLSG-vI>

Link for 800086 headlights: <https://www.youtube.com/watch?v=sA7AxDIYgwc>



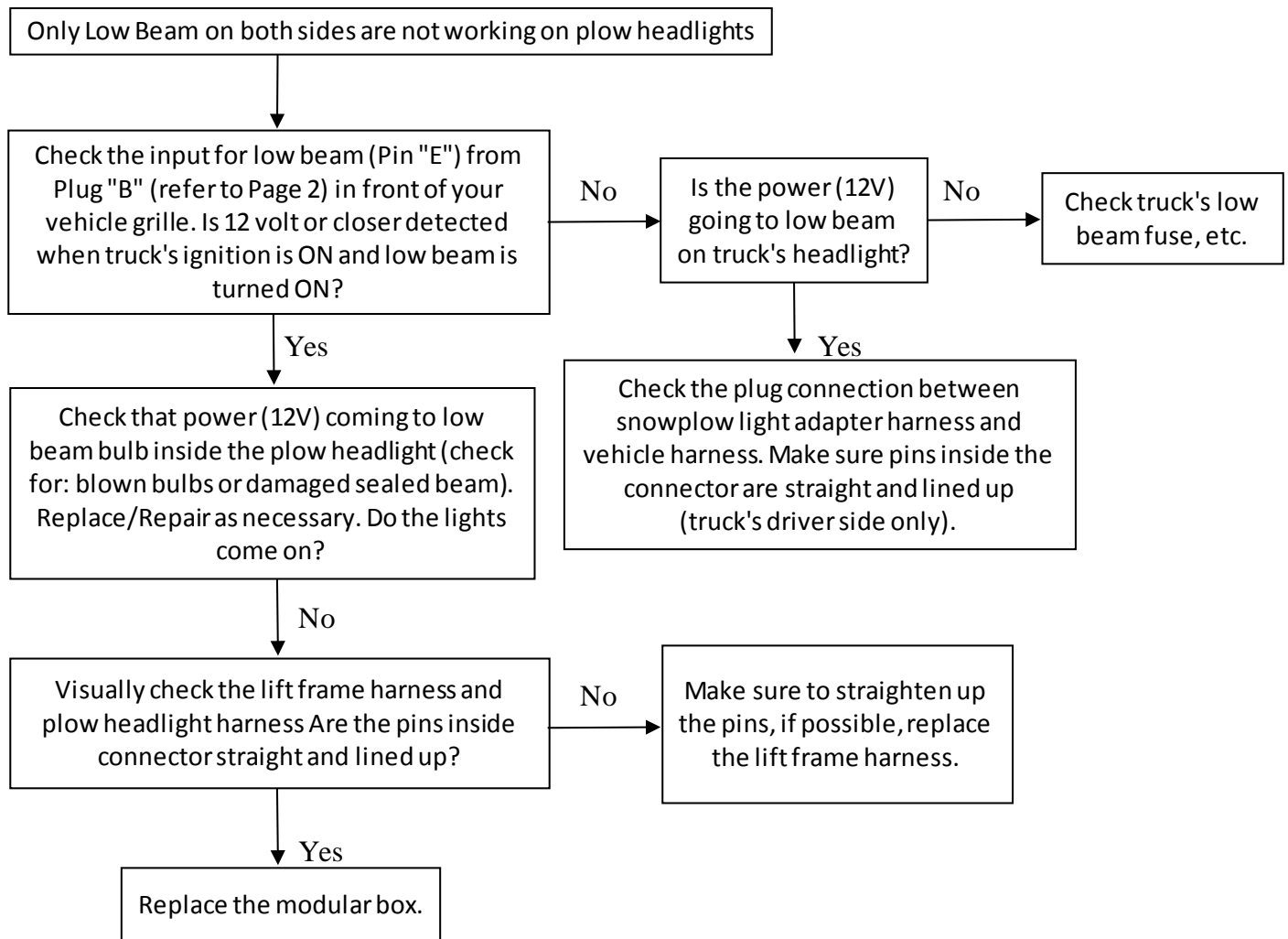
Restart truck's ignition after every step of troubleshooting.

Click on the link <https://www.youtube.com/watch?v=P-pG9PIvAA4> to watch the video of this specific troubleshooting step.

Link for 800084 headlights: <https://www.youtube.com/watch?v=LJlgbdwop8Q>

Link for 800085 headlights: <https://www.youtube.com/watch?v=fn09WLSG-vI>

Link for 800086 headlights: <https://www.youtube.com/watch?v=sA7AxDIYgwc>



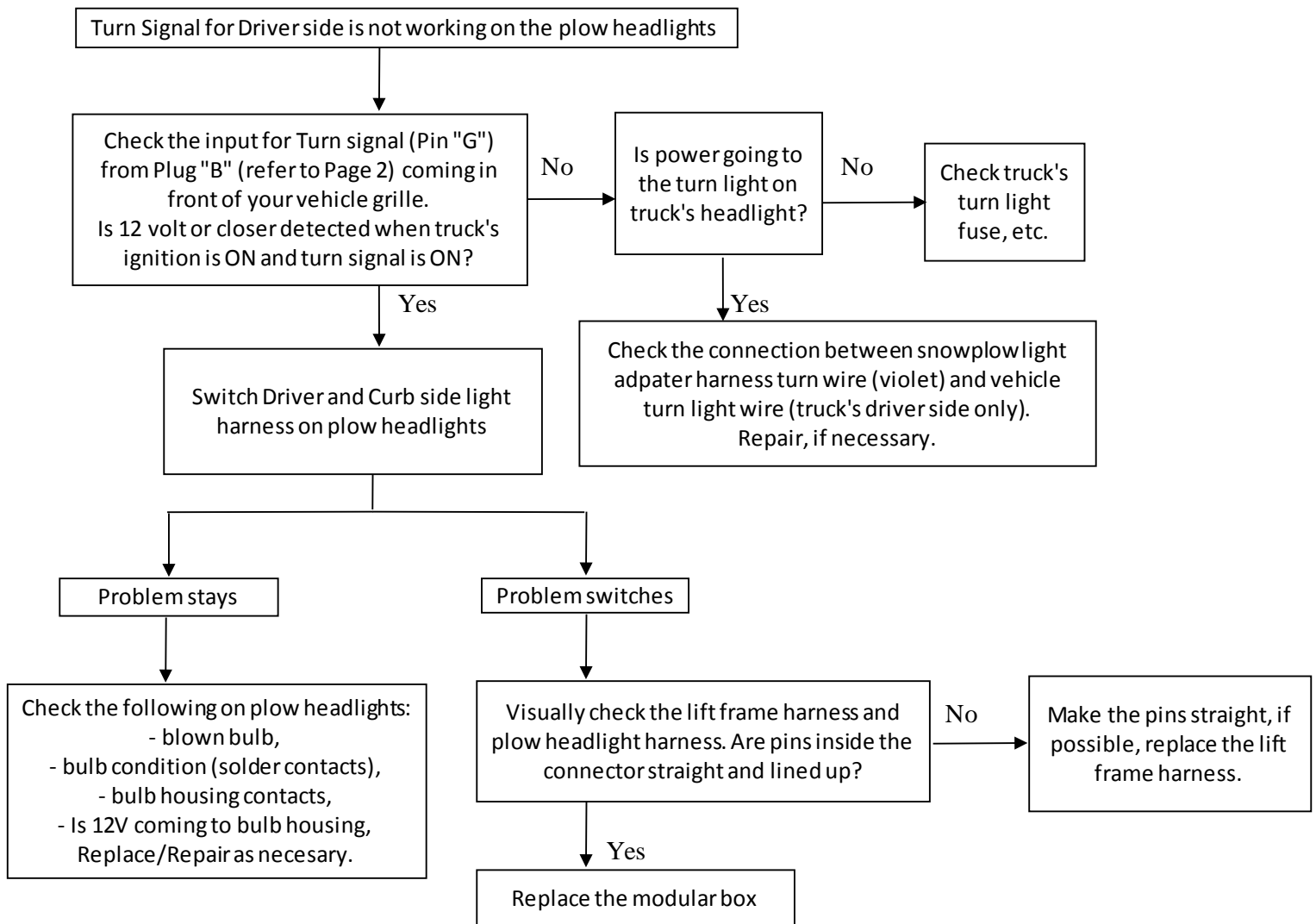
Restart truck's ignition after every step of troubleshooting.

Click on the link <https://www.youtube.com/watch?v=etNSjUYB0Ec> to watch the video of this specific troubleshooting step.

Link for 800084 headlights: <https://www.youtube.com/watch?v=LJlgbdwop8Q>

Link for 800085 headlights: <https://www.youtube.com/watch?v=fn09WLSG-vI>

Link for 800086 headlights: <https://www.youtube.com/watch?v=sA7AxDIYgwc>



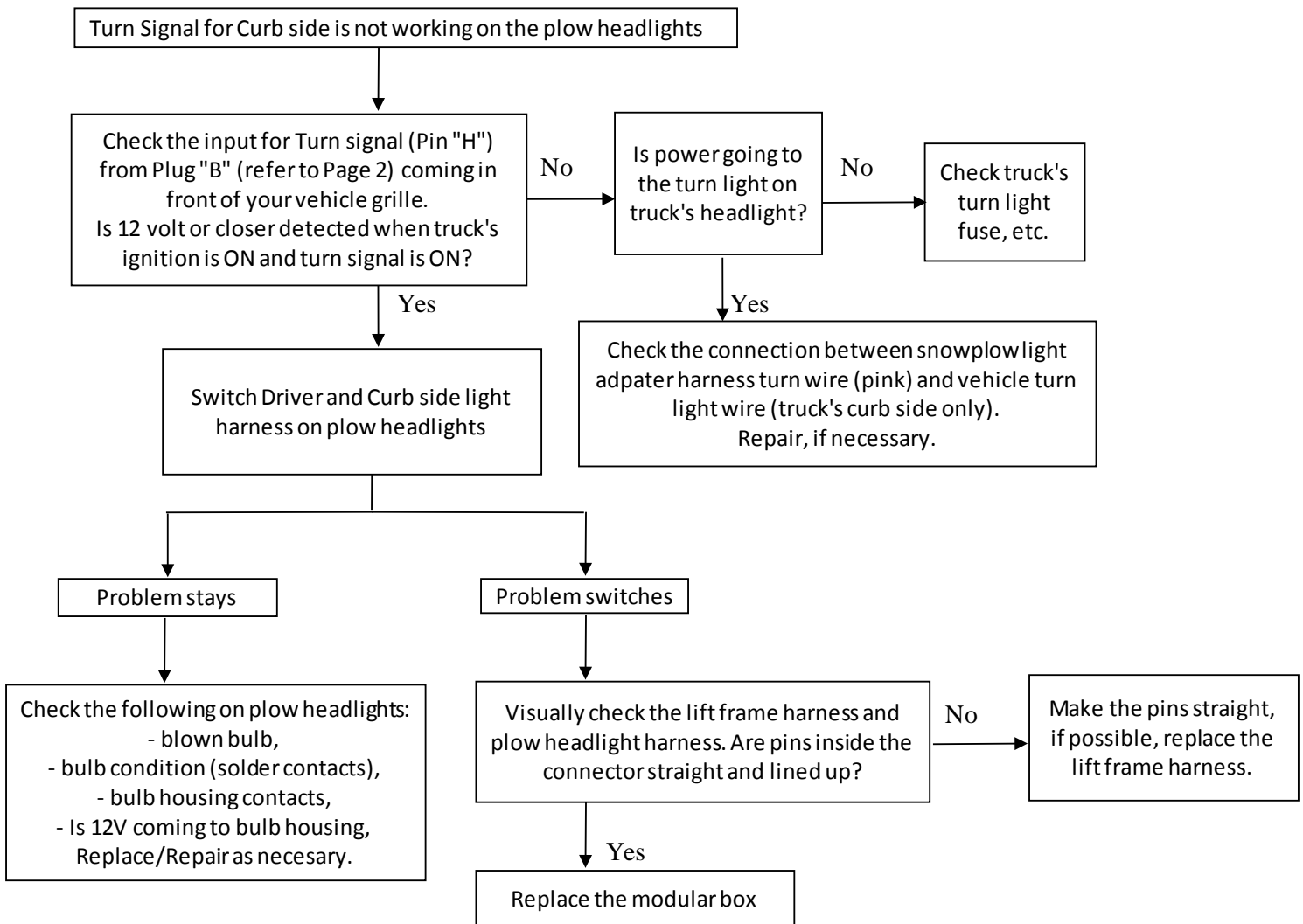
Restart truck's ignition after every step of troubleshooting.

Click on the link <https://www.youtube.com/watch?v=V92YWwG10KI> to watch the video of this specific troubleshooting step.

Link for 800084 headlights: <https://www.youtube.com/watch?v=LJlgbdwop8Q>

Link for 800085 headlights: <https://www.youtube.com/watch?v=fn09WLSG-vI>

Link for 800086 headlights: <https://www.youtube.com/watch?v=sA7AxDIYgwc>



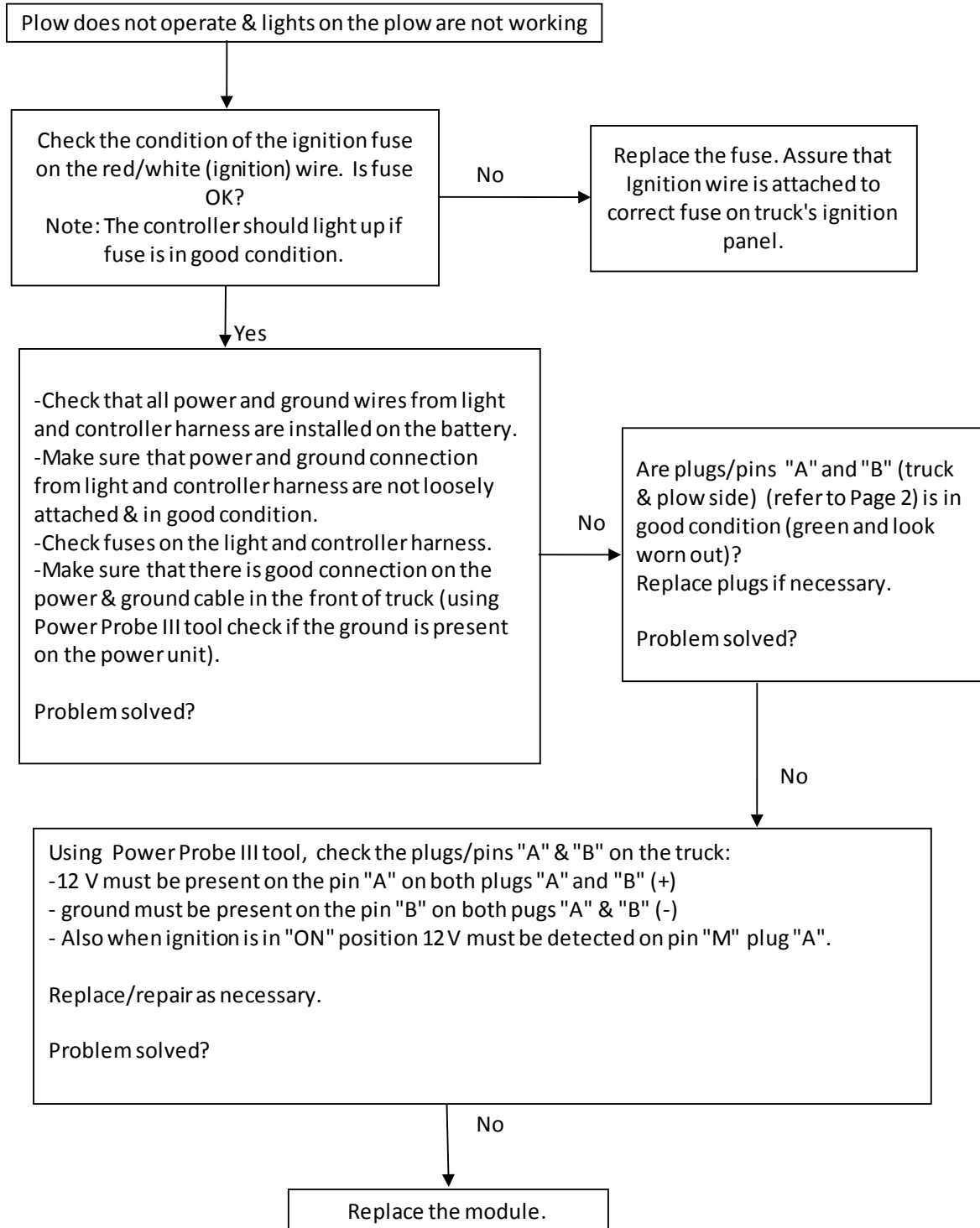
Restart truck's ignition after every step of troubleshooting.

Click on the link <https://www.youtube.com/watch?v=ZZ1qNz3hqzE> to watch the video of this specific troubleshooting step.

Link for 800084 headlights: <https://www.youtube.com/watch?v=LJlgbdwop8Q>

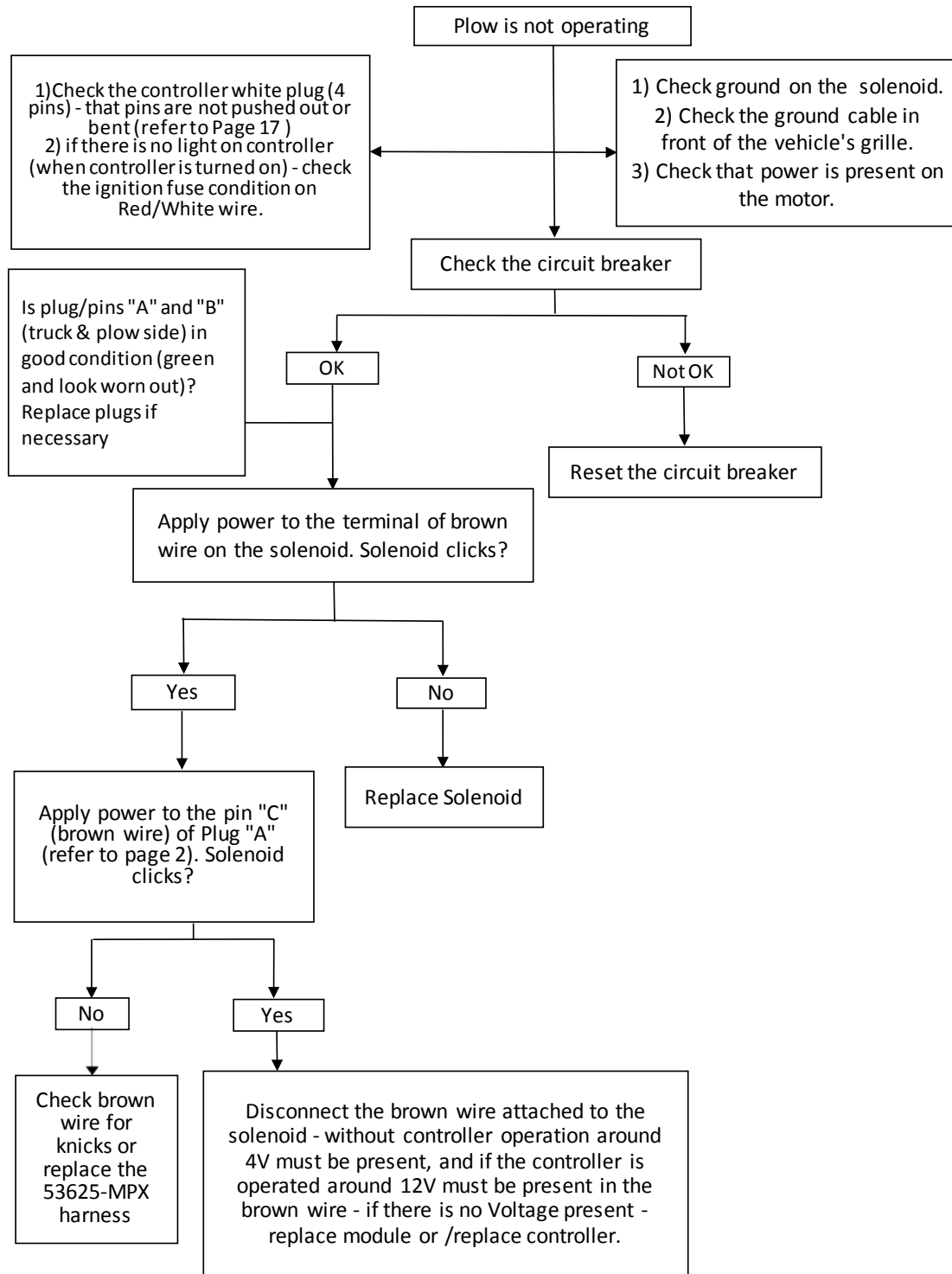
Link for 800085 headlights: <https://www.youtube.com/watch?v=fn09WLSG-vI>

Link for 800086 headlights: <https://www.youtube.com/watch?v=sA7AxDIYgwc>



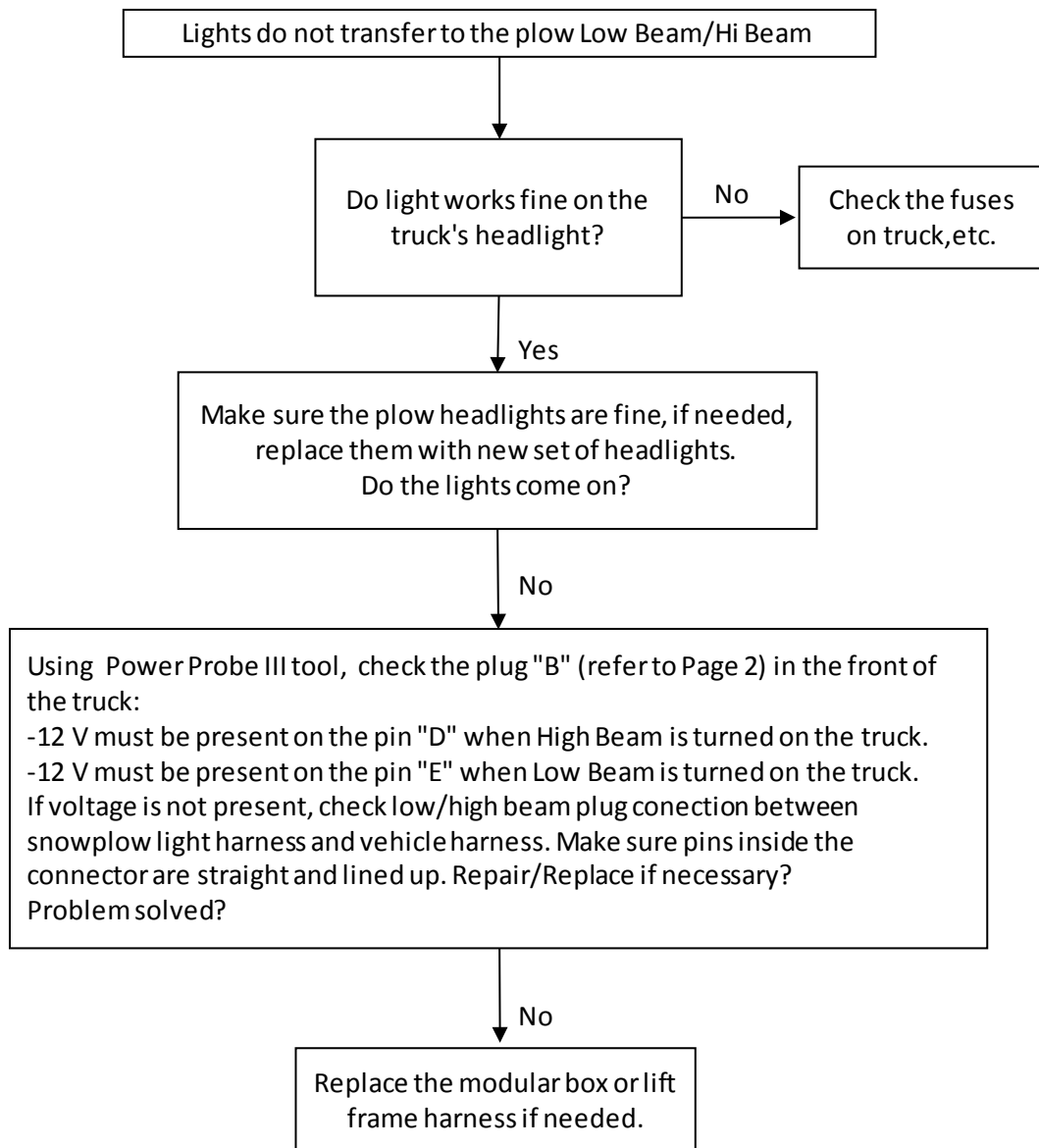
Restart truck's ignition after every step of troubleshooting.

Click on the link <https://www.youtube.com/watch?v=7Xb6IqrcroE> to watch the video of this specific troubleshooting step.



Restart truck's ignition after every step of troubleshooting.

Click on the link <https://www.youtube.com/watch?v=VFVqe-yPWjU&feature=youtu.be> to watch the video of this specific troubleshooting step.



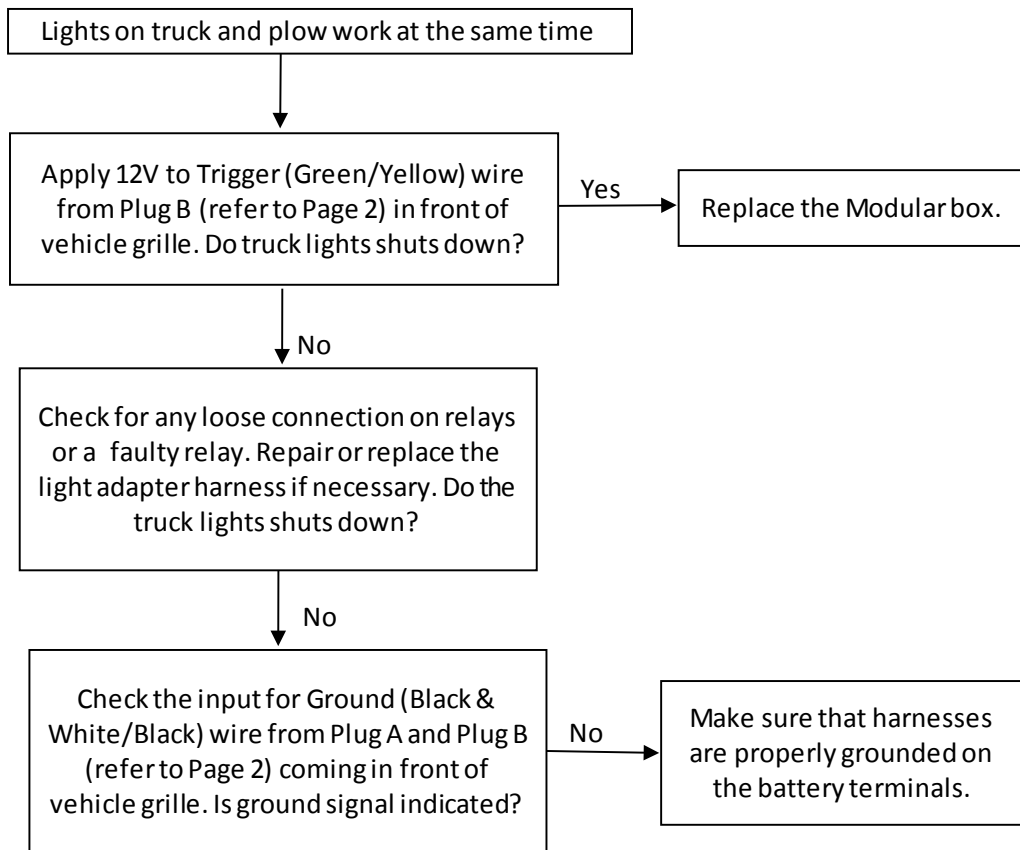
Restart truck's ignition after every step of troubleshooting

Click on the link <https://www.youtube.com/watch?v=P-pG9PIvAA4> and <https://www.youtube.com/watch?v=etNSjUYB0Ec> to watch the video of this specific troubleshooting step.

Link for 800084 headlights: <https://www.youtube.com/watch?v=LJlgbdwop8Q>

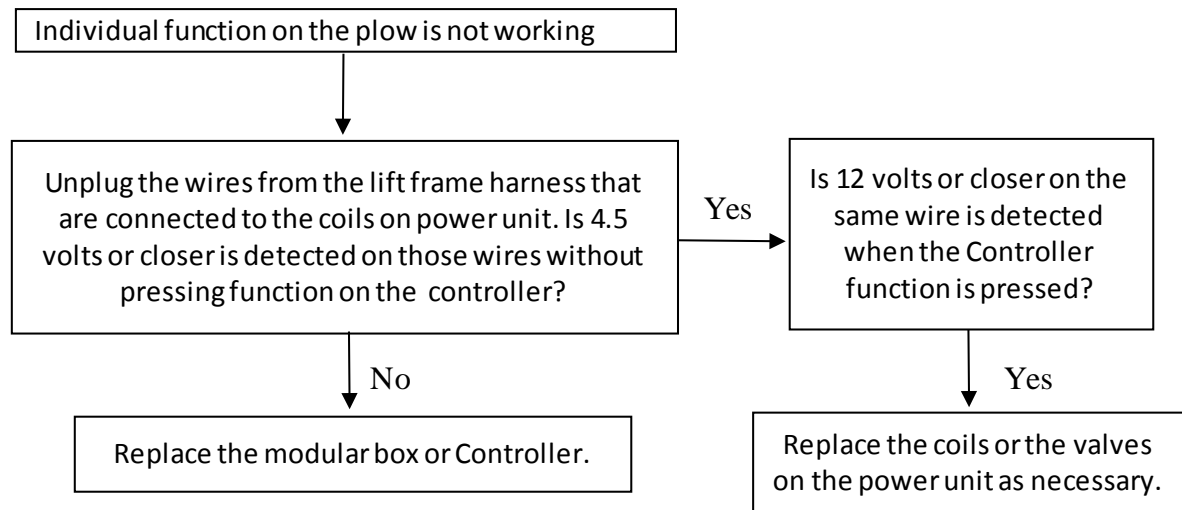
Link for 800085 headlights: <https://www.youtube.com/watch?v=fn09WLSG-vI>

Link for 800086 headlights: <https://www.youtube.com/watch?v=sA7AxDIYgwc>



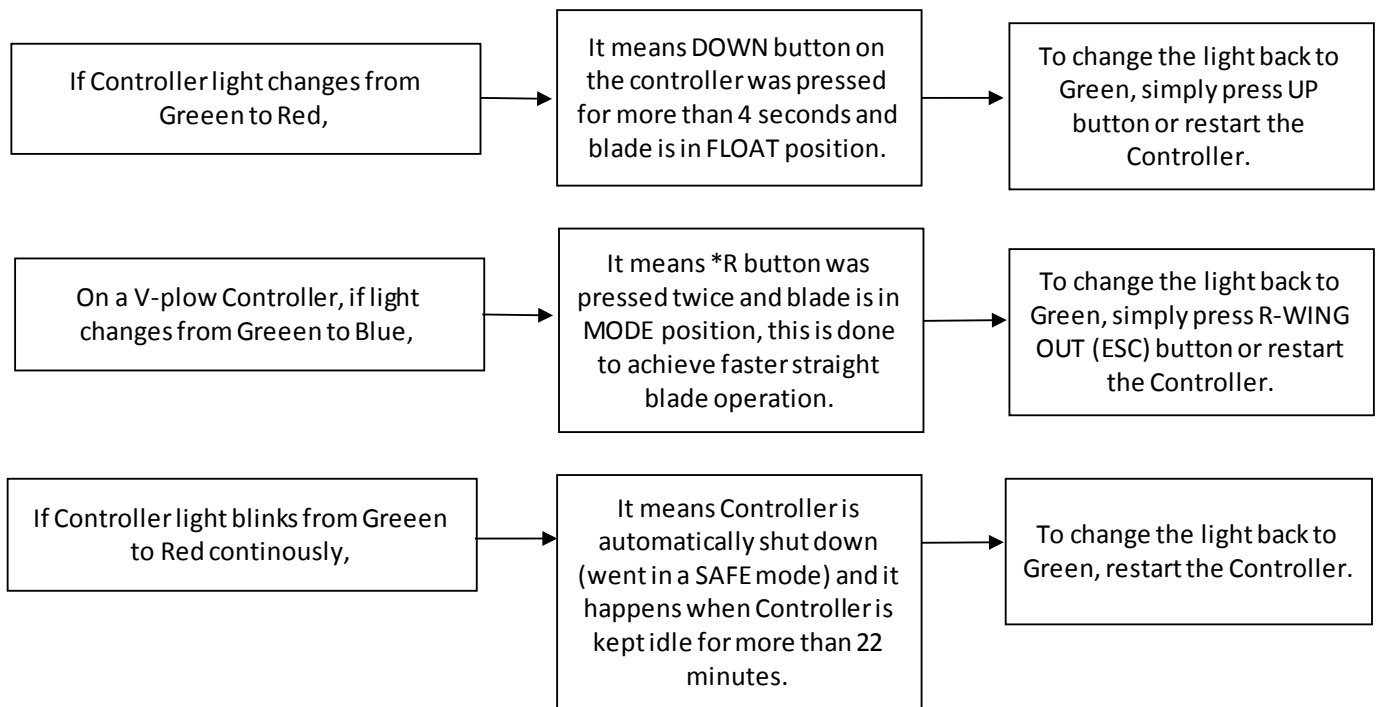
Restart truck's ignition after every step of troubleshooting.

Click on the link <https://www.youtube.com/watch?v=EhCBVoH8dac> to watch the video of this specific troubleshooting step.



Restart truck's ignition after every step of troubleshooting.

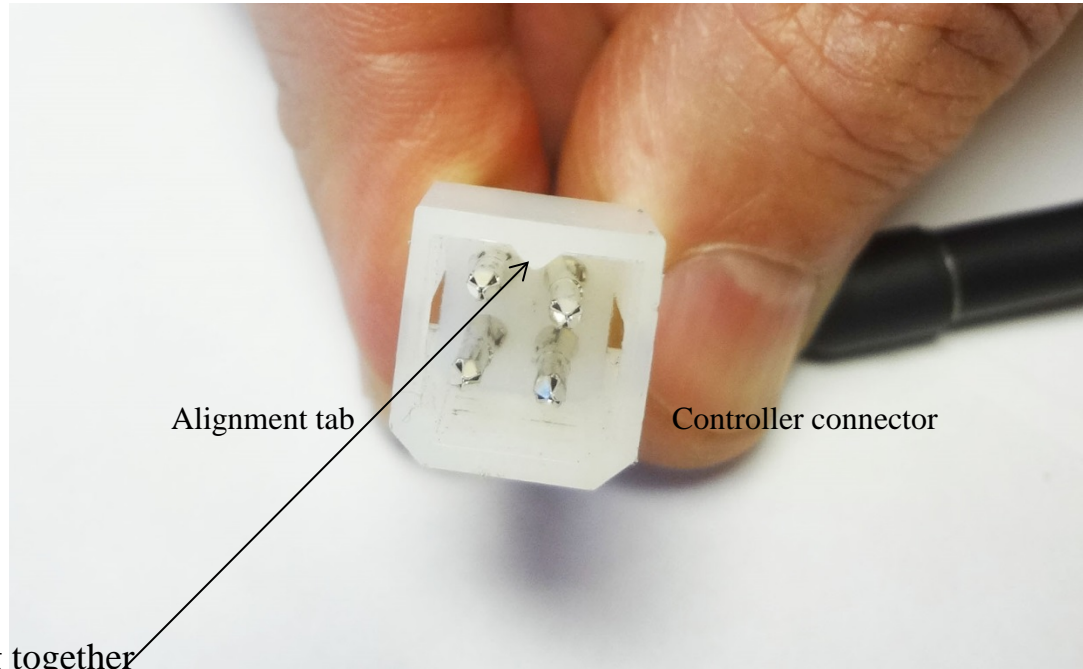
Click on the link <https://www.youtube.com/watch?v=K1ERrFWnUw0> to watch the video of this specific troubleshooting step.



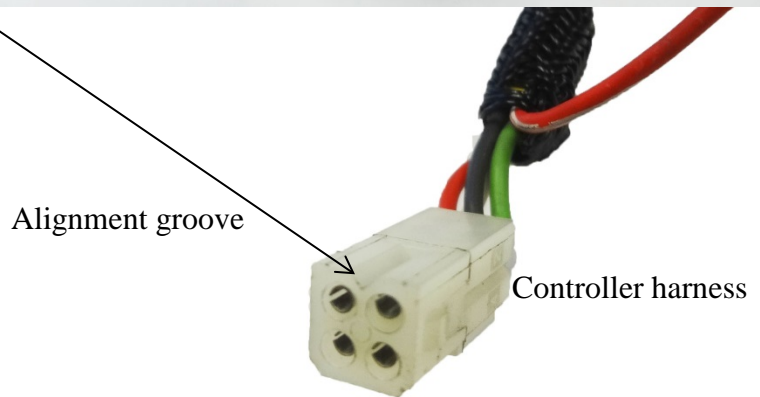
Restart truck's ignition after every step of troubleshooting.

Click on the link <https://www.youtube.com/watch?v=gKqEarX4FrQ> to watch the video of this specific troubleshooting step.

Connectors alignment for the MPX system



Must align before plugging together



Tool for updating MPX module box (53707-N)



Check the link below to see step by step procedure on how to update the module box on your truck:

<https://www.youtube.com/watch?v=nGSTAm8hZ9Y>