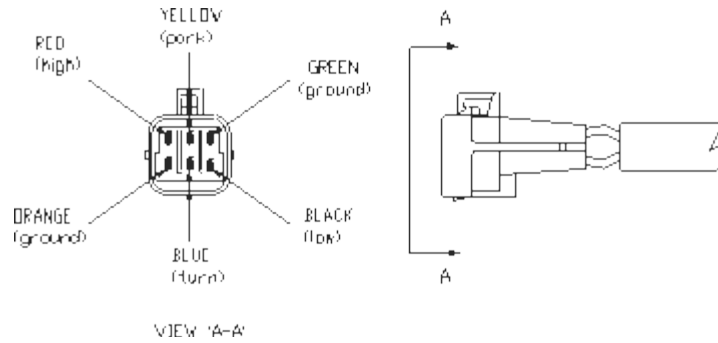


# Light Kit 800086

(dual bulb)

Click on the link <https://www.youtube.com/watch?v=sA7AxDIYgwc> to watch the troubleshooting video of 800086 headlights



Light kit (dual bulb) 800086			
Item	Part #	Description	Quantity
1	800073-01-D	Low Beam Halogen Bulb, H7, 55W	1
2	800073-02-D	High Beam Halogen Bulb, H1, 55W	1
3	800074	Amber Signal Bulb	1
4	421061-2	Light harness	1
4	800068-D	Driver Side Light Assembly	1
5	800069-D	Curb Side Light Assembly	1
6	800071-02	Bag Parts for Hamsar lights	1

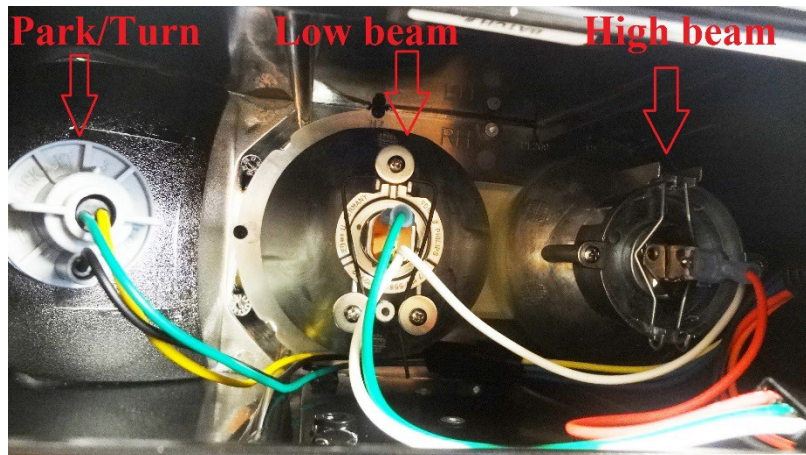
Arctic Equipment Manufacturing Corporation reserves the right under its product improvement policy to change construction or design details and furnish equipment when so altered without reference to illustrations or specifications used.

## 800086 Headlight Removal & Reinstall Instructions

- Take out the screw at the back of headlight using screwdriver, remove the black cap that is shown in Picture 1.

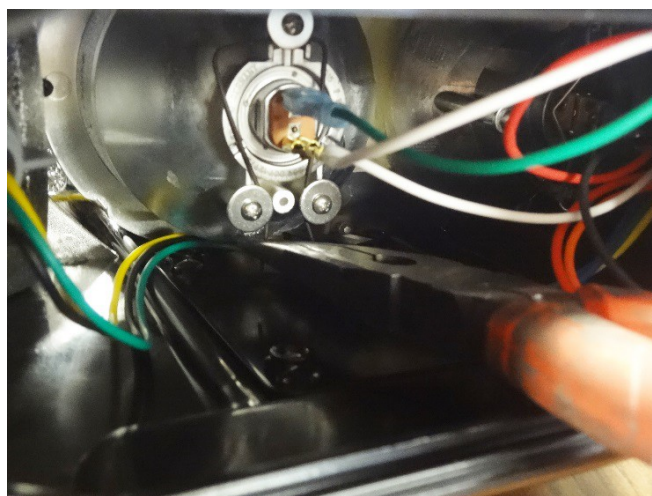


Picture 1



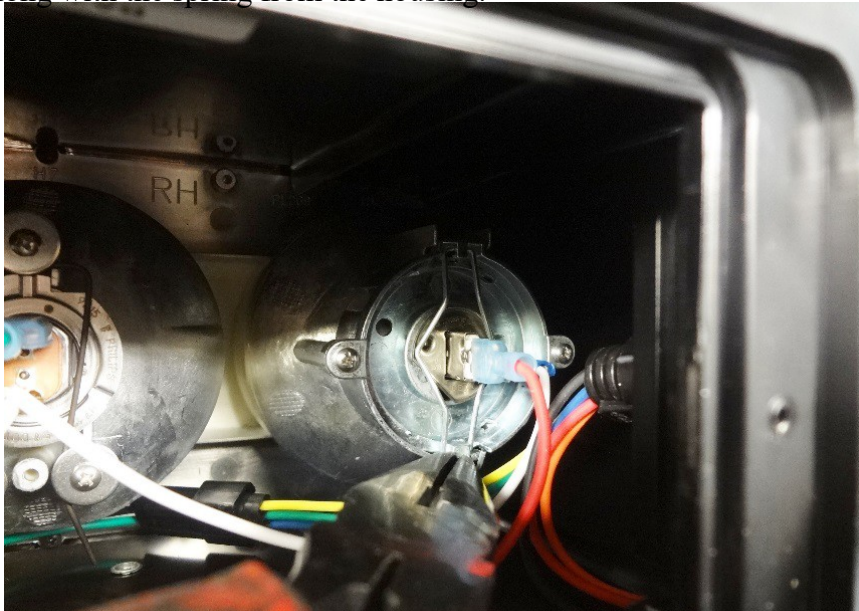
Picture 2

- In order to remove the low beam (H7) bulb, get a long needle nose plier. Push on the spring inwards (one side at a time) around the flat washer as shown in Picture 3. By doing so, low beam (H7) bulb will come out of the housing & spring will stay on the housing.



Picture 3

- To install low beam bulb back on the housing, locate the bulb in the housing by aligning the spring the way it was prior of it taking it out. (refer to Picture 3).
- To remove high beam bulb, again use long needle nose plier, push the spring outwards for it to come out of the slot (one side at a time) as shown in Picture 4. By doing so, high beam bulb will come out along with the spring from the housing.



Picture 4

- To get the high beam bulb back on the housing, hold the spring in top slot while aligning the spring into the bottom slot around the bulb.
- Rotate the turn/park bulb counter clockwise to get the turn/park bulb out from the housing.



**Low beam H7 bulb**  
**Part# : 800073-01-D**



**High beam H1 bulb**  
**Part# : 800073-02-D**