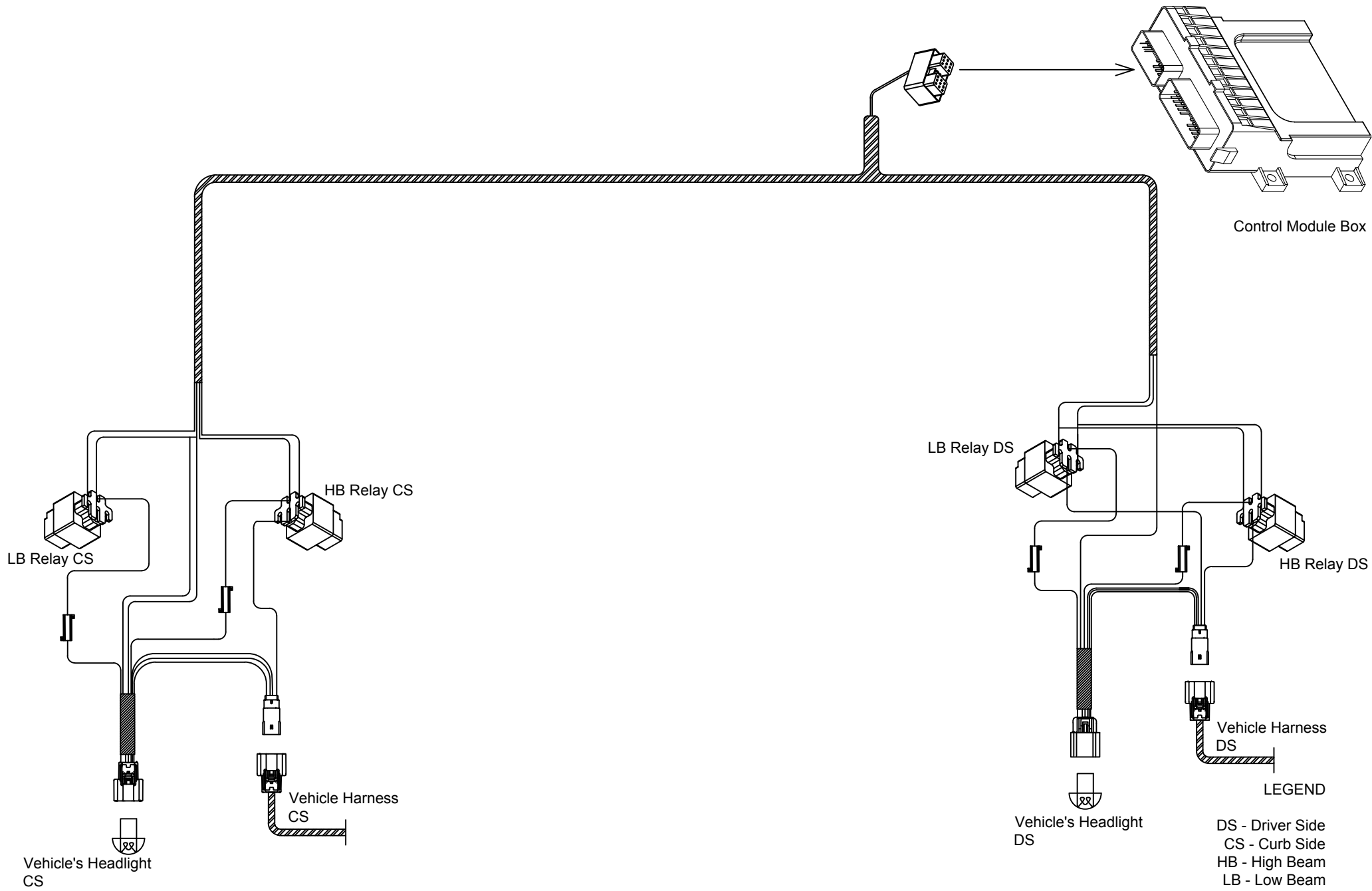


## 800090-MPX-1

### Light harness installation instructions

(module installed under the vehicle hood)



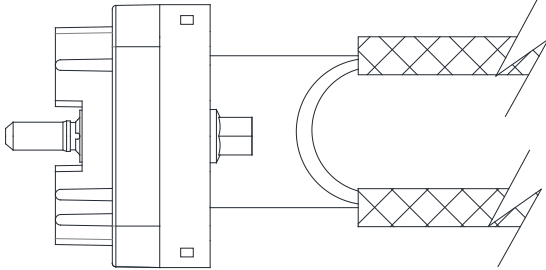


## Installation instructions

### **Warning:**

- Top of battery needs to be protected. If positive side of battery is accidentally grounded person could be burnt or wiring system can be damaged, or battery gasses could explode causing injuries.
- Disconnect cable from negative battery terminal before starting installation.
- Always wear eye protection and protective clothing when working around hydraulic systems.
- Remove jewelry and objects that might conduct electricity while working on power units.
- Electrical cables (harnesses) must be tied and routed safely to avoid any damage and pinching (away from hot places, sharp objects etc.).
- When drilling mounting holes or using self-tapping screws in the engine compartment, be sure to check the mounting location for any wires, hoses other obstructions that could be damaged during installation.

1. Turn off the ignition of your vehicle.
2. Disconnect both battery cables (negative & positive).
3. Use dielectric grease on all electrical connections to prevent corrosion.
4. Install the light harness 800090-MPX-1 avoiding any sharp edges, any moving or hot parts. Use cable ties to safely secure the harness.
5. Unplug the vehicle light harness from the vehicle headlamp (driver side). Attach driver side (shorter side) of the light harness 800090-MPX-1 to the corresponding connector on the vehicle headlamp. Also plug other connector from the light harness 800090-MPX-1 to the vehicle harness (connector) removed from the vehicle headlamp.
6. Unplug the vehicle light harness from the vehicle headlamp (curb side). Attach curb side of the light harness (longer side) 800090-MPX-1 to the corresponding connector on the vehicle headlamp. Also plug other connector from the light harness to the vehicle harness (connector) removed from the vehicle headlamp.
7. Make sure that relay terminals are very well greased & placed in a safe position away from hot or moving parts.
8. Attach the connector (see picture below) from the light harness 800090-MPX-1 to the MPX module located under the hood, driver side.



9. Snow Plow Lamps should be mounted in the desired location on the snowplow frame ensuring that the snow plow lamp beams are not obstructed by any portion of the plow or vehicle.

10. After installation of the light harness 800090-MPX-1, main control harness, all cables and wiring check for proper operation of the light.

11. Parking & turn lamps should be on at same time as vehicle parking & turn lamps. If any lamp does not operate correctly, re-check wiring against wiring diagram and make necessary corrections in wiring hookup. Adjust the plow lamp beams to project the same distance ahead of the vehicle as compared to the original headlights.

13. Installer of these snow plow lamps must certify that installation conforms to applicable Federal Motor Vehicle Safety Standards.

.

Arctic Equipment Manufacturing Corporation reserves the right under its product improvement policy to change construction or design details and furnish equipment when so altered without reference to illustrations or specifications used.