

# Arctic Equipment Manufacturing Corporation

## Arctic XHD-P

---

### Table of Contents

Arctic Extra Heavy Duty Poly Blade 120" (Blade, Quadrant & A-frame).....	2
Shock Absorber Installation.....	5
Power Angling Installation.....	8
QUIK*LINK ® II HI DLC.....	14
QUIK*LINK ® III HI DLC.....	16
QUIK*LINK ® III HI TILT.....	19

QUIK\*LINK is a trademark of Arctic Equipment Manufacturing Corporation

**Arctic XHD-P**  
**Arctic Extra Heavy Duty Poly Blade 120" (10')**  
**(Blade, Quadrant & A-frame)**

10' Poly Blade (Blade Assembly, Hardware Kit, Power Angling Assembly) Galvanized

Item	Part Number	Description	Quantity		
			52943-M-GA Blade Assembly	53027-M Hardware Kit	52944-M-GA Power Angling Assembly
1	53010-C	Poly Skin	1		
2	53030-B	Cutting Edge	1		
3	50037-B-GA	Shoe Assembly Galvanized	2		
4	53028-B	Poly Deflector	1		
5	53029-B-GA	Deflector Strap Galvanized	1		
6	52290-M	Deflector Bolt Kit(includes 5/16 x 1.25 carriage bolt, lockwasher and nut)	1		
7	HH-00971-136	1/2-13x1.1/2 Carriage Bolt	22		
8	HH-00457-001	1/2 Lockwasher	22		
9	HH-00294-005	1/2-13 Hex Nut	22		
10	HH-00340-005	5/8-11 Nyl. Ins. Locknut	12		
11	HH-00971-196	5/8-11x2 Carriage Bolt	12		
12	50191-M	Eye Bolt Assembly		6	
14	50180-C	Trip Spring		6	
15	50232-M	3/4"x3" Rivet Assembly		4	
17	55018-M	Chain		2	
18	53325-A	Spreader pin		2	
19	HH-00020-164	Cotter pin		2	
20	HH-00972-090	1/2-20x1.1/2 Capscrew		2	2

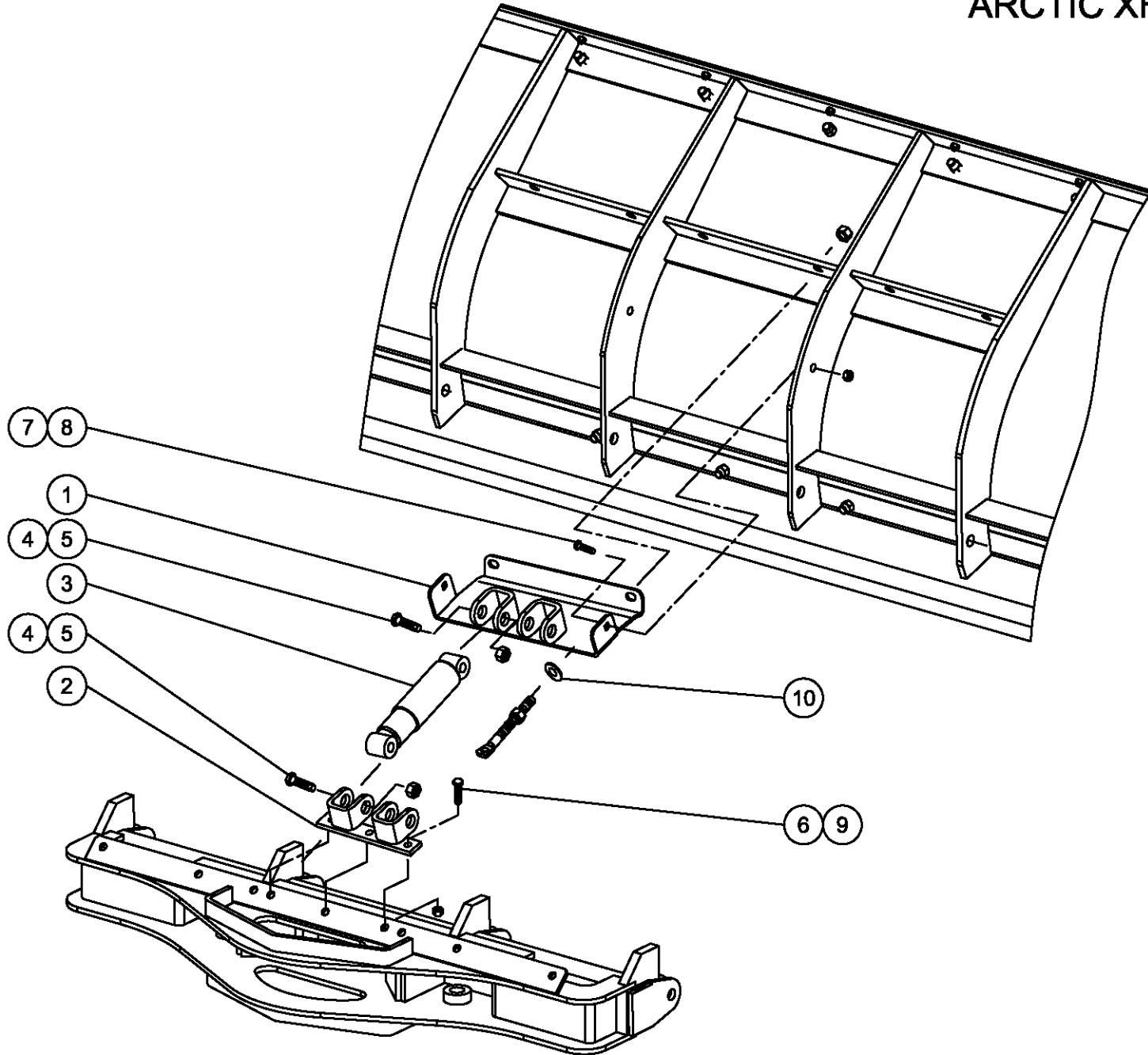
10' Poly Blade (Blade Assembly, Hardware Kit, Power Angling Assembly) Galvanized

Item	Part Number	Description	Quantity		
			52943-M-GA Blade Assembly	53027-M Hardware Kit	52944-M-GA Power Angling Assembly
21	HH-00460-002	1/2-20 Hex Nut		2	2
22	HH-00457-001	1/2 Lockwasher		2	2
23	52945-D-GA	A-frame Galvanized			1
24	52955-D-GA	Quadrant Galvanized			1
25	53026-NRS	Cylinder 2" x 11.5"			2
26	HH-00972-192	1-12 5.1/2" Capscrew			1
27	HH-00540-009	1-12 Nylon Insert Locknut			1
28	HH-00972-158	3/4 X 5 1/2 NF Capscrew			2
29	HH-00972-152	3/4-16x3.1/4 Capscrew			2
30	HH-00973-007	3/4" Hex Nut Nylon Insert			4
32*	HH-00233-001	1/4-28 Grease Fitting			1

\* Not shown on the drawing

**Shock Absorber Mounting Kit  
for ARCTIC XHD-P (10' Poly Blade)  
53087-M**

# SHOCK ABSORBER FOR ARCTIC XHD-P (10' POLY)



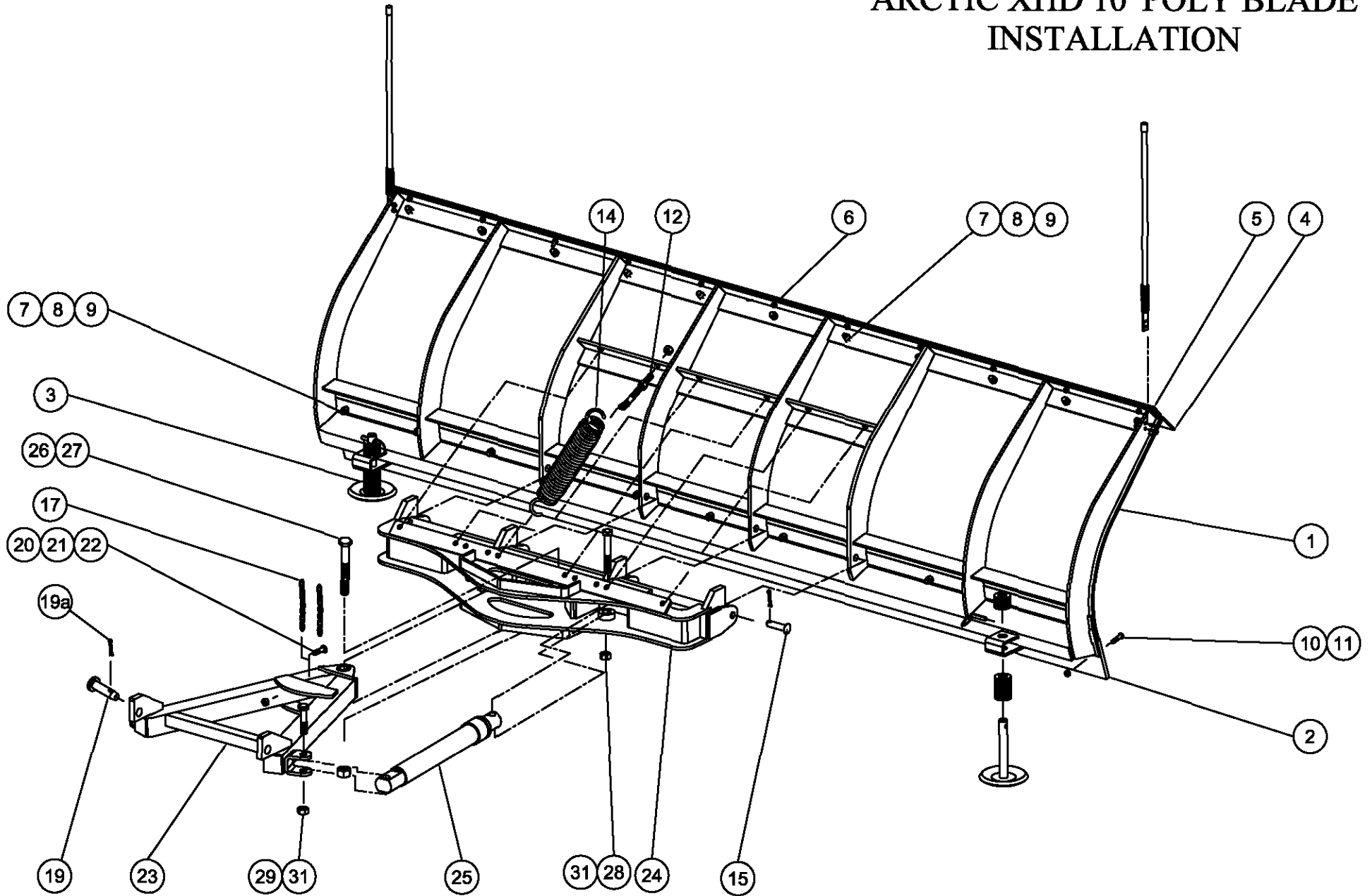
Shock Absorber Mounting Kit 53087-M-GA 10' Poly Blade Galvanized			
Item	Part #	Description	Quantity
1	53088-B-GA	Upper plate assembly Galvanized	1
2	53090-A-GA	Lower plate assembly Galvanized	1
3	51984-M	Shock Absorber	2
4	HH-00972-151	3/4-16x3 Hex Head Cap Bolt	4
5	HH-00973-007	3/4-16 Nut Nylon	4
6	HH-00972-089	1/2-20x1.1/4 Hex Head Cap Bolt	3
7	HH-00971-135	1/2-13x1.1/4 Carriage Bolt	2
8	HH-00340-003	1/2" NC Nut Nylon	2
9	HH-00540-004	1/2" UNF Nut Nylon	3
10	HH-00341-008	5/8" Flat washer	2

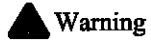
**Installation instruction:**

1. Remove the two centre springs.
2. Install the upper plate assembly (1) using 1/2" carriage bolt (7) and 1/2" nut (8) to the ribs of the blade.
3. Install the lower plate assembly (2) to the quadrant using 1/2" hex head bolt (6) and nut (9).
4. Return the two centre springs using 5/8" flat washer (10) under the nut of the eye bolt.
5. Install the shock absorbers (3) using 3/4" bolt (4) and 3/4" nut (5).

# Arctic Extra Heavy Duty Poly Blade 10', Quadrant & A-frame Installation

# ARCTIC XHD 10' POLY BLADE INSTALLATION

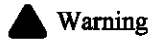




**Warning**

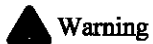
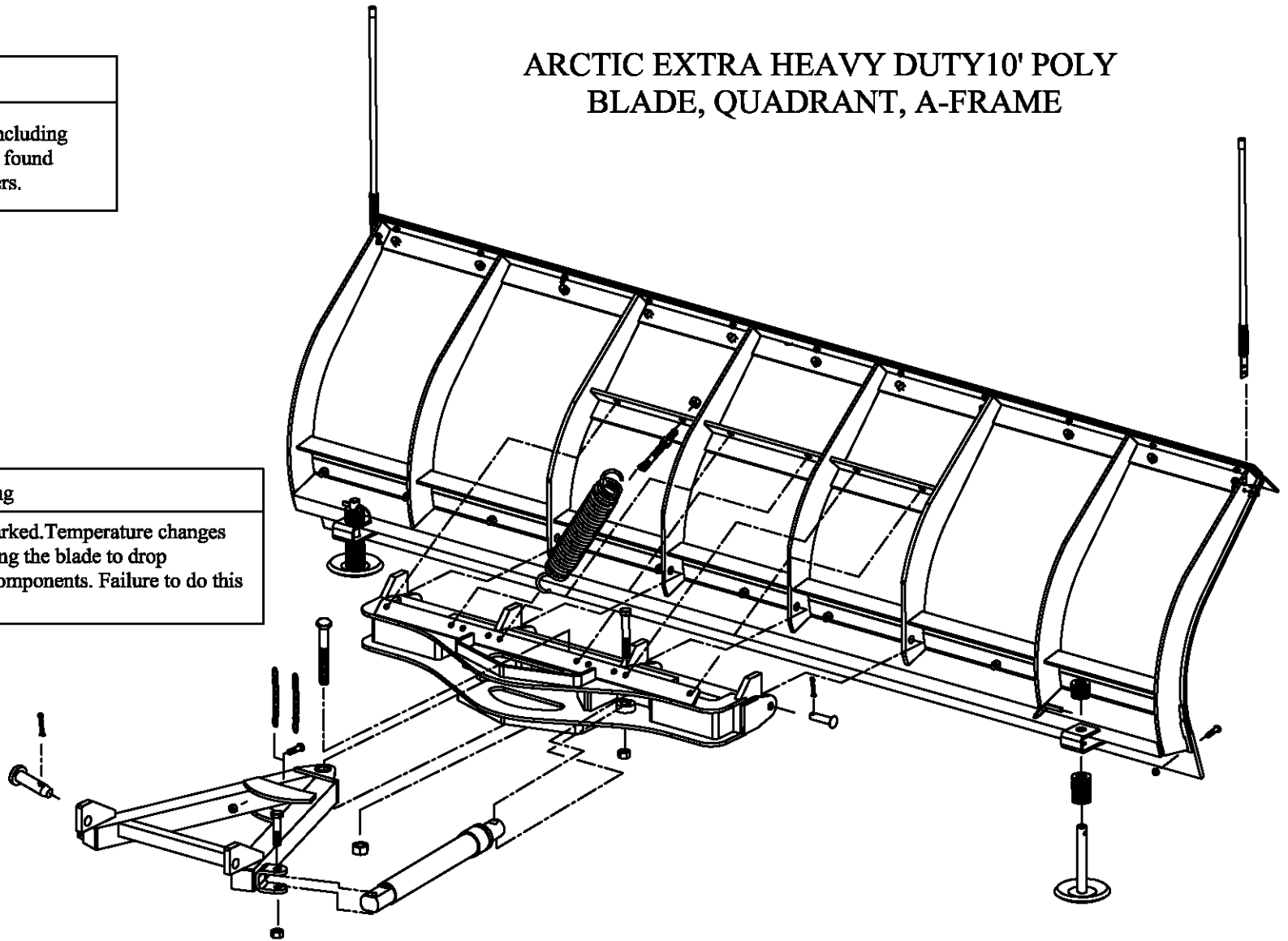
Do not exceed GVWR or GAWR, including blade and ballast. The rating label is found on the driver side vehicle door corners.

## ARCTIC EXTRA HEAVY DUTY 10' POLY BLADE, QUADRANT, A-FRAME



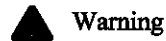
**Warning**

Lower the blade when the vehicle is parked. Temperature changes could change hydraulic pressure, causing the blade to drop unexpectedly or damaging hydraulic components. Failure to do this can result in serious personal injury.



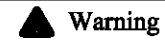
**Warning**

Inspect snowplow components and bolts for wear and damage when mounting or removing snowplow and before traveling.



**Warning**

Keep hands and feet clear of the blade, A-frame and cylinders when mounting or removing the snowplow. Moving or falling assemblies could cause personal injury. Never use a finger to check an alignment. Moving or falling assemblies could crush your finger.



**Warning**

Do not stand between the vehicle and the blade or within 10' of a moving blade. A moving or falling blade could cause personal injury.

# Arctic Equipment Manufacturing Corporation

Installation of Arctic XHD 10' blade, quadrant & A-frame

53027-M R08

INST0066

Arctic XHD Poly Blade (Blade Assembly, Hardware Kit, Power Angling Assembly) Galvanized					
Item	Part Number	Description	Quantity		
			52943-M-GA Blade Assembly	53027-M Hardware Kit	52944-M-GA Power Angling Assembly
1	53010-C	Poly Skin	1		
2	53030-B	Cutting Edge	1		
3	50037-B-GA	Shoe Assembly Galvanized	2		
4	53028-B	Poly Deflector	1		
5	53029-B-GA	Deflector Strap Galvanized	1		
6	52290-M	Deflector Bolt Kit(5/16 x 1.25 carriage bolt, lock washer & nut)	1		
7	HH-00971-136	1/2-13x1.1/2 Carriage Bolt	22		
8	HH-00457-001	1/2 Lock washer	22		
9	HH-00294-005	1/2-13 Hex Nut	22		
10	HH-00340-005	5/8-11 Nyl. Ins. Locknut	12		
11	HH-00971-196	5/8-11x2 Carriage Bolt	12		
12	50191-M	Eye Bolt Assembly		6	
14	50180-C	Trip Spring		6	
15	50232-M	3/4"x3" Rivet Assembly		4	
17	55018-M	Chain		2	

# Arctic Equipment Manufacturing Corporation

Installation of Arctic XHD 10' blade, quadrant & A-frame

53027-M R08

INST0066

Arctic XHD Poly Blade (Blade Assembly, Hardware Kit, Power Angling Assembly) Galvanized					
Item	Part Number	Description	Quantity		
			52943-M-GA Blade Assembly	53027-M Hardware Kit	52944-M-GA Power Angling Assembly
19	53325-A	Spreader Pin		2	
19a	HH-00020-164	Cotter pin		2	
20	HH-00972-090	1/2-20x1.1/2 Cap screw		2	
21	HH-00460-002	1/2-20 Hex Nut		2	
22	HH-00457-001	1/2 Lockwasher		2	
23	52945-D-GA	A-frame Galvanized			1
24	52955-D-GA	Quadrant Galvanized			1
25	53026-NRS	Cylinder 2" x 11.5"			2
26	HH-00972-192	1-12 5.1/2" Cap screw			1
27	HH-00540-009	1-12 Nylon Insert Locknut			1
28	HH-00972-158	3/4 X 5 1/2 NF Cap screw			2
29	HH-00972-152	3/4-16x3.1/4 Cap screw			2
30	HH-00973-007	3/4" Hex Nut Nylon Insert			4
32*	HH-00233-001	1/4-28 Grease Fitting			1

\*Not shown on the drawing

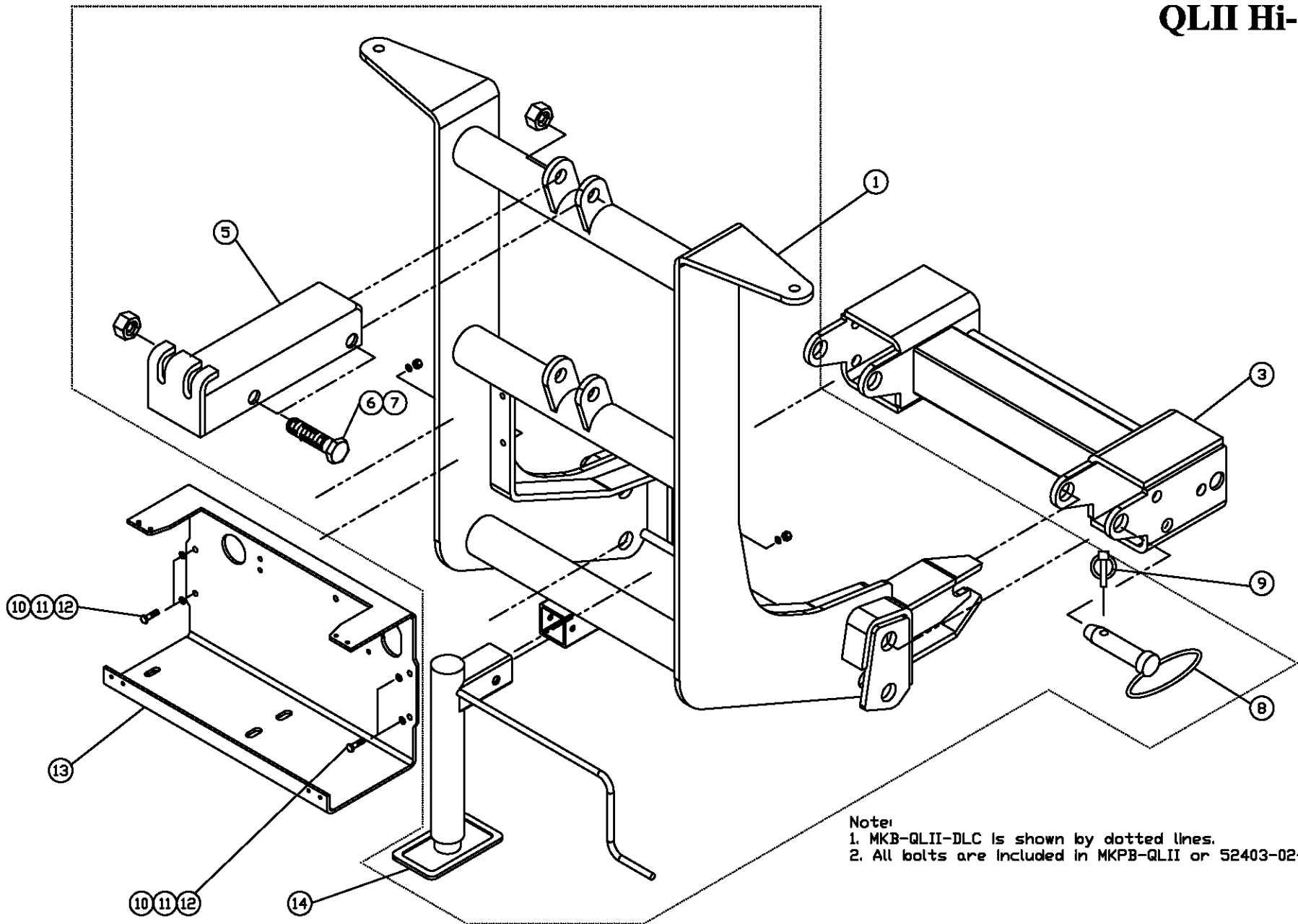
### **Installation Instructions**

1. Lay blade face down on the floor. Attach quadrant (24) to blade by inserting rivets (15) through the holes in the quadrant lugs and blade ribs. Install the centre one first. Secure the rivets with the cotter pins.
2. Take an eye bolt (12) and screw one 5/8" nut all the way down the thread. Attach spring (14) to the quadrant and the eye bolt, making sure the open end of the spring faces up on the quadrant. Lift the quadrant and insert the eye bolt through the corresponding hole in the spring plate. Secure the eye bolt with another 5/8" nut. This will hold the quadrant in an upward position, and ease installation of the remaining five springs.
3. Tighten the eye bolt upper nut until the spring coils just break loose from each other. Secure eye bolts in position by tightening the lower nut against the blade spring plate.
4. Lift chains (17) are attached by inserting a 1/2" bolt (20) through the last link and in the hole in the A-frame lifting bar. Tighten a 1/2" nut (21) and lock washer (22) firmly from the face side of the lifting bar.

To attach snowplow to vehicle mount, proceed as follows:

1. Position the vehicle such that the A-frame lugs and vehicle mount are in vertical alignment.
2. Hook the chain into the lift channel slot.
3. Actuate lift cylinder slowly. Blade will remain on the ground, but the A-frame will begin to rise. Continue until the A-frame lug holes align with the holes on the vehicle mount.
4. Insert the spreader pins (19) through the holes to attach the A-frame to the vehicle mount. Secure attachment by inserting cotter pins (19a) into the spreader pins.
5. With the control switch in the DOWN position, push the lift channel downward as far as possible and adjust the chain so there are two links of slack.
6. Check the cutting edge clearance. Use a combination of spacer washers until 1/2" clearance between the ground and cutting edge is achieved. Secure shoes by inserting the lynch pins into the shoe.

# QLII-HI-DLC QLII Hi-Boy



Note:  
1. MKB-QLII-DLC is shown by dotted lines.  
2. All bolts are included in MKPB-QLII or 52403-02-M.

<b>QLII-HI-DLC-GA Hi Boy with double chain Galvanized</b>			
<b>Item</b>	<b>Part #</b>	<b>Description</b>	<b>Quantity</b>
1	53171-D- GA	QUIK*LINK ® II Hi-Boy Lift Frame Galvanized	1
2	53214-M-GA	Double chain kit Galvanized	1

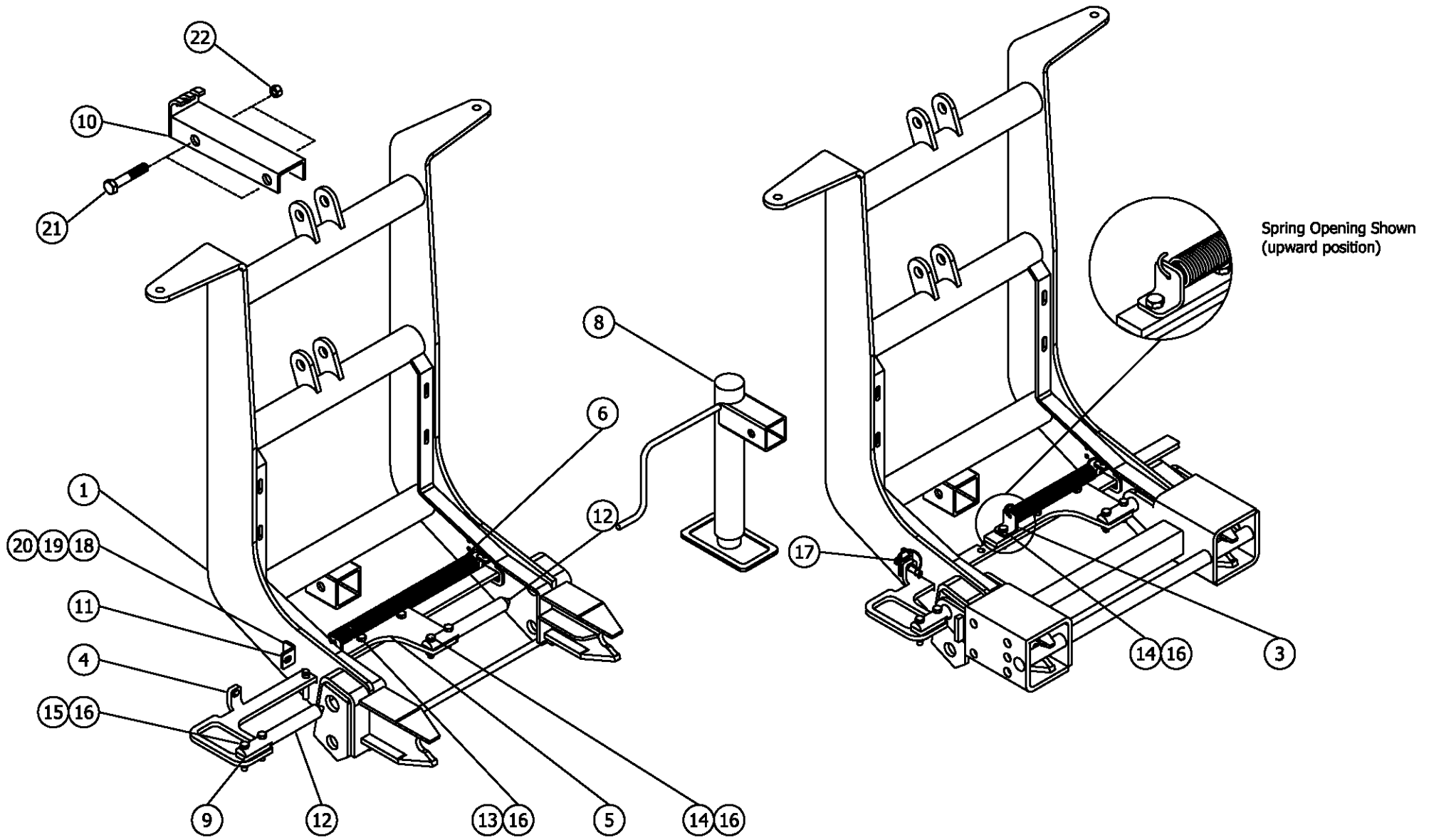
<b>53214-M-GA Double chain kit Galvanized</b>					
<b>Item</b>	<b>Part #</b>	<b>Description</b>	<b>53214-M-GA</b>	<b>MKPB</b>	<b>52403-02-M-GA Pump Kit</b>
3	52363-C-G	QUIK*LINK ® II Spreader Bar Galvanized		1	
*4	52364-C-G	Ford QUIK*LINK ® II Spreader Bar Galvanized			
5	52612-B-GA	Lift Channel (2" cylinder) Galvanized	1		
<u>6</u>	HH-00972-155	3/4" x 4" UNF Cap screw	2		
**7	HH-00973-007	3/4" UNF Thin Collar Locknut	2		
8	52348-A	Spreader Pin	2		
9	50040-A	Lynch Pin	2		
10	HH-00972-029	5/16 x 1 1/4 UNF Hex Cap screw			4
11	HH-00460-005	5/16" Hex Nut			4
12	HH-00457-007	5/16" Lock Washer			8
13	52870-C-GA	Mounting Plate			1
14	52373-M	Jack Assembly	1		
*15	50999-B	Blade Guides	2		

QUIK\*LINK is a trademark of Arctic Equipment Manufacturing Corporation

Note: \* items (4, 15) are not shown on the drawing.

\*\*item (7) is part of the bolt bag.

# QLIII-HI-DLC



<b>QLIII-HI-DLC-GA Mounting Kit Galvanized</b>			
<b>Item</b>	<b>Part #</b>	<b>Description</b>	<b>Quantity</b>
1	53171-D-GA	Lift Frame Galvanized	1
2	53216-M-GA	Single Lift Chain Kit Galvanized	1

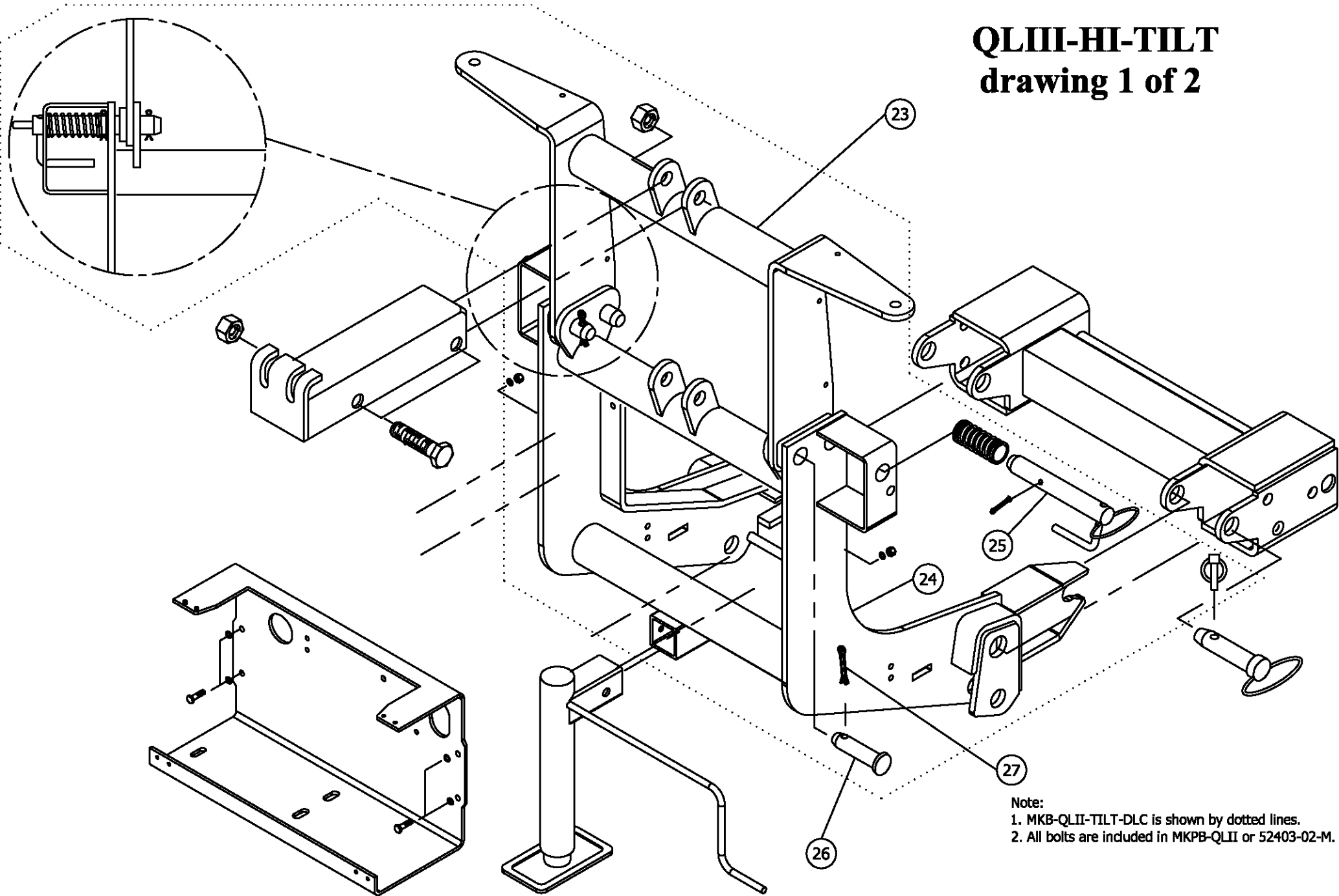
<b>53216-M-GA Double Lift Chain Kit Galvanized</b>			
<b>Item</b>	<b>Part #</b>	<b>Description</b>	<b>Quantity</b>
3	53179-M	Spring Bracket	1
4	53177-M	Handle	1
5	53178-M	Top Plate	1
6	53182-N	Spring	1
7*	50999-B	Blade Marker	1
8	52373-M	Jack Ass'y	1
9	53180-M	Spacer	1
10	52612-B-GA	Lift Channel Double Chain Galvanized	1
11	53174-M	Lock Bracket	1
12	53181-M	Pin	2
**13	HH-00293-050	3/8-16x1.1/4 Hex Head Cap Screw	2
**14	HH-00293-051	3/8-16x1.1/2 Hex Head Cap Screw	3
**15	HH-00293-053	3/8-16x2 Hex Head Cap Screw	2
**16	HH-00340-001	3/8-16 Nut (Nylon Insert)	7
**17	53183-N	Hitch Pin	1
**18	HH-00294-001	1/4-20 Hex Nut	2
**19	HH-00457-006	1/4 Lockwasher	2
**20	HH-00293-006	1/4-20x1 Hex Head Cap Screw	2
21	HH-00972-155	3/4" x 4" UNF Cap screw	2
22	HH-00973-007	3/4" Lock nut	2

**Installation**

1. Install the pin (12) on the end of the handle (4) (install the spacer (9) between the pin (12) and the handle (4)) using 3/8" x 2" bolts and 3/8" nylon lock nuts (15) (16).

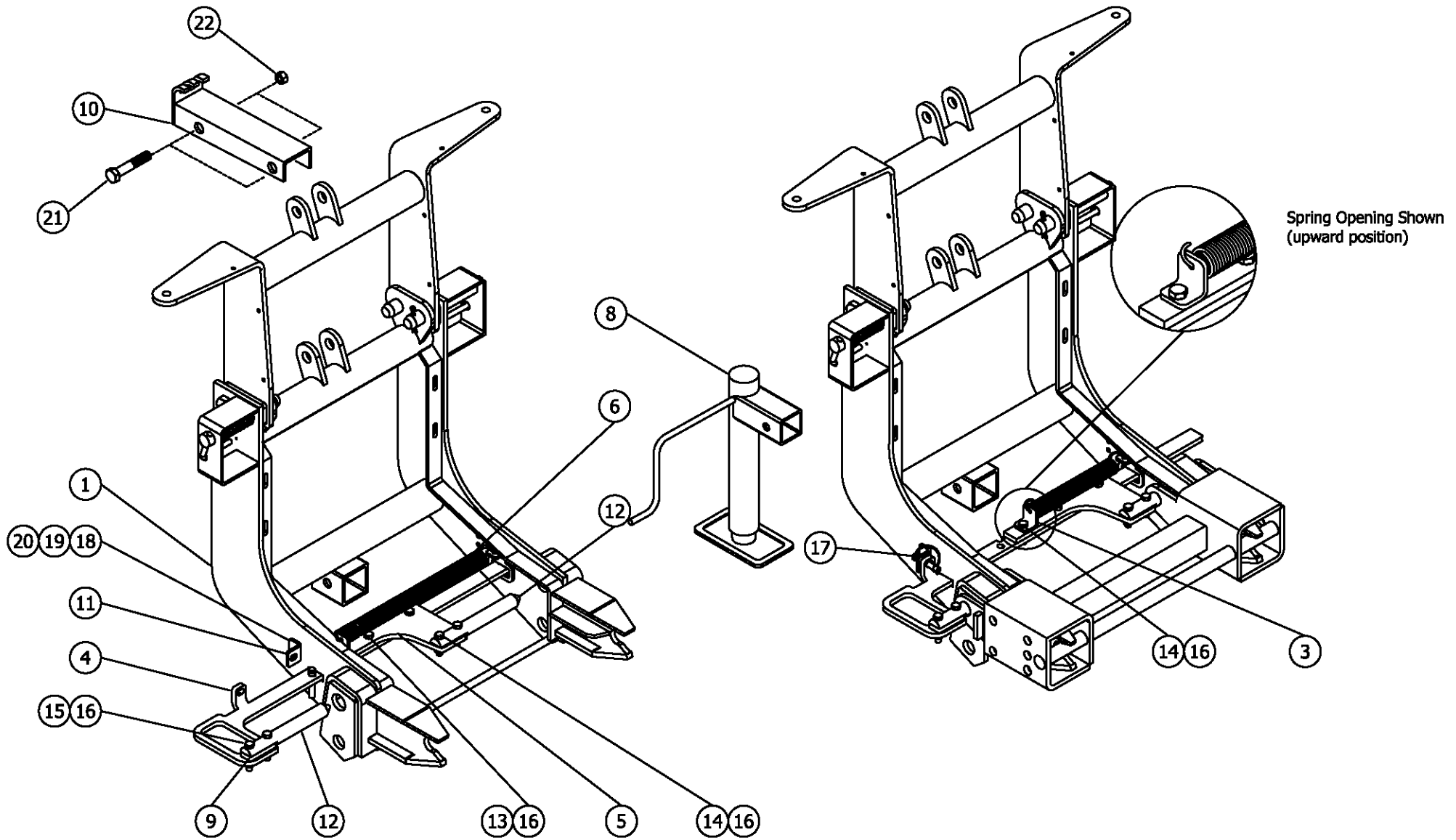
2. Insert partially assembled handle through the rectangular opening inside of the lift frame (1) and attach spring (6), top plate (5), spring bracket (3) and pin (12) as shown on the drawing.
3. Install the lock bracket (11) using 1/4" bolt (20), lockwasher (19) and nut (18).
4. Do not tighten lock nuts (16) attached to the pins completely. Pins must float.

# QLIII-HI-TILT drawing 1 of 2



Note:  
1. MKB-QLII-TILT-DLC is shown by dotted lines.  
2. All bolts are included in MKPB-QLII or 52403-02-M.

# QLIII-HI-TILT drawing 2 of 2



**Arctic Equipment Manufacturing Corporation**  
**Mounting Kit QLIII-HI-TILT**

QLIII-HI-TILT

<b>QLIII-HI-TILT Mounting Kit Galvanized rev 1</b>			
<b>Item</b>	<b>Part #</b>	<b>Description</b>	<b>Quantity</b>
1	53341-M-GA	Tilt Hi-Boy Lift Frame Assembly Galvanized	1
2	53216-M-GA	Double Lift Chain Kit Galvanized	1

<b>53216-M Double Lift Chain Kit Galvanized</b>			
<b>Item</b>	<b>Part #</b>	<b>Description</b>	<b>Quantity</b>
3	53179-M	Spring Bracket	1
4	53177-M	Handle	1
5	53178-M	Top Plate	1
6	53182-N	Spring	1
7*	50999-B	Blade Marker	1
8	52373-M	Jack Ass'y	1
9	53180-M	Spacer	1
10	52612-B-GA	Lift Channel Double Chain Galvanized	1
11	53174-M	Lock Bracket	1
12	53181-M	Pin	2
**13	HH-00293-050	3/8-16x1.1/4 Hex Head Cap Screw	2
**14	HH-00293-051	3/8-16x1.1/2 Hex Head Cap Screw	3
**15	HH-00293-053	3/8-16x2 Hex Head Cap Screw	2
**16	HH-00340-001	3/8-16 Nut (Nylon Insert)	7
**17	53183-N	Hitch Pin	1
**18	HH-00294-001	1/4-20 Hex Nut	2
**19	HH-00457-006	1/4 Lockwasher	2
**20	HH-00293-006	1/4-20x1 Hex Head Cap Screw	2
21	HH-00972-155	3/4" x 4" UNF Cap screw	2
22	HH-00973-007	3/4" Lock nut	2

\* Note: Items are not shown on the drawing.

\*\* These parts are part of 53170-M-BB

**Installation:**

1. Install the pin (12) on the end of the handle (4) (install the spacer (9) between the pin (12) and the handle (4)) using 3/8" x 2" bolts and 3/8" nylon lock nuts (15)(16).
2. Insert partially assembled handle through the rectangular opening inside of the lift frame (1) and attach spring (6), top plate (5), spring bracket (3) and pin (12) as shown on the drawing.
3. Install the lock bracket (11) using 1/4" bolt (20), lockwasher (19) and nut (18).
3. Do not tighten lock nuts (16) attached to the pins completely. Pins must float.

<b>53341-M Tilt Hi-Boy Lift Frame Assembly Galvanized</b>			
<b>Item</b>	<b>Part #</b>	<b>Description</b>	<b>Quantity</b>
23	53339-D-GA	Lift Frame Top Assembly Galvanized	1
24	53340-D-GA	Lift Frame Bottom Assembly Galvanized	1
25	53338-A	Pin Weldment	2
26	53325-A	Spreader Pin	2
27	HH-00020-164	Cotter pin	2