

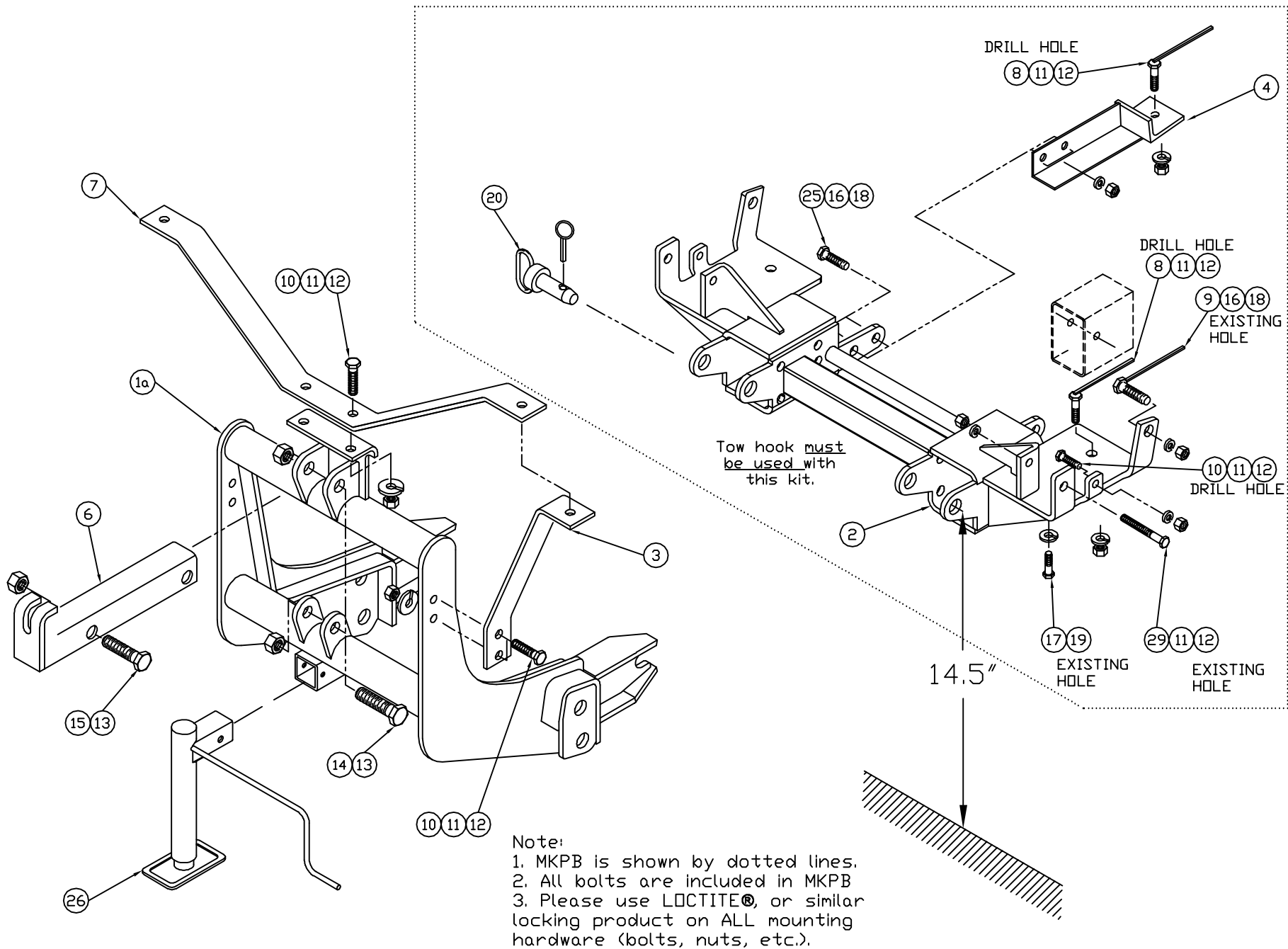
MOUNTING KIT

53380-MKPB

K2500HD Sierra/Silverado 4x4 2011-2012
K3500 Sierra/Silverado DRW 4x4 2011-2012
K3500 Sierra/Silverado SRW 4x4 2011-2012

(Note: For the snowplow lights this kit requires: 800067 or 800037AXV Light kit, 800038 Relay Kit and Adapter kit: 800042 (vehicle's bulb H9005 (HB3) and H11)

MOUNTING KIT 53380-MKPB-QLII



Arctic Equipment Manufacturing Corporation
Mounting kit 53380-MKPB

53380-MKPB R00

Mounting Kit 53380-MKPB						
Item	Part #	Description	MKPB-QLII	QLII-MKB	QLII-HI	QLII-HI-DLC
1a	53170-D-GA	Lift Frame, QUIK*LINK ® II Galvanized		1		
1b*	53171-D-GA	Lift Frame, QUIK*LINK ® II-Hi boy Galvanized				1
2	53381-D	Mounting Bracket	1			
3	52208-B-GA	Light Brace Galvanized		2		
4	53385-01-B	Thrust Arm DS	1			
5*	53385-02-B	Thrust Arm LS	1			
6	50069-C-GA	Lift Channel Galvanized			1	
6a*	52612-B-GA	Lift Channel (2" cylinder) Galvanized				1
7	52209-B-GA	Light Antler Galvanized		1		
8	52575-06-A	½" Bolt Weldment	4			
9	52575-05-A	5/8" Bolt Weldment	2			
10	HH-00972-090	½"x1 ½" Bolt	10			
11	HH-00457-001	½" Lock washer	14			
12	HH-00460-002	½" Hex Nut	14			
13	HH-00973-007	¾" Thin Collar Locknut	3			
14	HH-00972-153	¾"x3 ½" Bolt	2			
15	HH-00972-149	¾"x2 ½" Bolt	1			
16	HH-00457-003	5/8" Lock washer	6			

Arctic Equipment Manufacturing Corporation
Mounting kit 53380-MKPB

53380-MKPB R00

Mounting Kit 53380-MKPB						
Item	Part #	Description	MKPB-QLII	QLII-MKB	QLII-HI	QLII-HI-DLC
17	HH-00909-032	12mm x 45mm Bolt Gr10.9	2			
18	HH-00460-001	5/8" Hex Nut	6			
19	HH-00933-004	12mm Lock washer	2			
20	52348-M	Mounting Pin, Assø			2	
21*	HH-00293-006	1/4"x1" Bolt	4			
22*	HH-00457-006	1/4" Lock washer	4			
23*	HH-00341-002	1/4" Flat washer	4			
24*	HH-00294-001	1/4" Hex Nut	4			
25	HH-00972-129	5/8"x1 3/4" Bolt	4			
26	52373-M	Jack Assembly			1	
27	50999-B	Blade guides			2	
28	HH-00972-155	3/4" x 4" UNF Cap screw				2
29	HH-01081-102	1/2"x 5" Bolt grade 8	2			

QUIK*LINK is a trademark of Arctic Equipment Manufacturing Corporation

Note: * These items are not shown on the drawing.

GENERAL

Customer must be aware of following:

Arctic Equipment Manufacturing Corporation (Arctic) does not assume liability for damage to your motor vehicle resulting from the attachment or use of an Arctic snowplow. The purchaser assumes all vehicle risk associated with the attachment and operation of this snowplow.

The Arctic snowplow you purchase must be used only on vehicles equipped with the manufacturer's snow plow preparation package. Snow plowing without the original plow preparation package may damage your vehicle. The added weight may impair the operation and control of your vehicle. Snow plowing with a vehicle not recommended for that purpose by the manufacturer may void your new vehicle warranty. If your vehicle is not equipped with an original snow plow preparation package, additional equipment may be necessary before snow plowing. Please consult your vehicle and snowplow dealers prior to the purchase and installation of the snowplow. The installation of such parts however is not a full substitute for the original equipment snowplow preparation package.

Before drilling any holes in the firewall or frame, move brake lines, fuel lines and/or electrical wiring from the path of the drill. All bolts should be installed from the inside of the truck frame so that the lock washers and nuts are accessible for re-tightening.

If a slotted hole in the truck frame is utilized, then a flat washer must be used under the bolt head. If a flat washer is used under a lock washer use LOCTITE #242. Also use this LOCTITE #242 if existing (vehicle) bolts and nuts are used.

General order of installation:

- install all components (mounting bracket, thrust arm and spreader bar) and all fasteners finger tight (snug) through existing holes,
- drill necessary holes and
- tighten all hardware.



After first use, re tighten all mounting bolts, thereafter check mounting bolt tightness periodically.

Before proceeding, read instructions carefully and familiarize yourself with the components and hardware.

INSTALLATION INSTRUCTIONS

1. Do not remove bumper from truck.
2. Do not tighten any hardware until instructed to do so.
3. Cut out 41" of the bottom of bumper (air dam) in order to fit lift frame and mounting bracket. (see attached picture)
4. Remove tow hooks and tow hook bolts. Remove splash pan from the bottom of the truck in order to install thrust arms.
5. Install mounting bracket (2). Be sure that mounting bracket (2) is tight against vehicle frame. Install ½" x 5" bolts. Drill ½" holes through side of the frame and through the bottom of vehicle frame (back hole), using ½" holes in mounting bracket (2) as guides. Install ½" x 1.5" bolt (10) through the side of vehicle frame and secure it with ½" lock washer (11) and nut (12).
6. Install tow hooks to their place. Secure mounting bracket (2) using ½" x 5" bolt (30)(goes through tow hook sleeve), ½" lock washer (11) and ½" hex nut (12). Install 12 mm bolt (17) and lock washer (19) through the bottom of the truck frame into tow hook.
7. Install 5/8" bolt with welded handle (9) through existing hole in the vehicle frame, and secure it with lock washer (16) and nut (18). Also install 1/2" bolt with welded handle (8) through the bottom of the frame, and secure with lock washer (11), and hex nut (12).
8. Attach thrust arm (4)(5) to mounting brackets (2) using 5/8" bolts (25), 5/8" lock washer (16), and 5/8" hex nuts (18). Drill ½" hole through the bottom of vehicle frame, using ½" hole in the thrust arms as guide. Install thrust arm driver side (4) and thrust arm curb side (5) to bottom of vehicle cross member using 1/2" bolt with welded handle (8), lock washer (11), and hex nut (12).
9. Tighten all hardware.
10. Install lift frame (1a)(1b). Slide inside of the mounting bracket (2). Insert the mounting pin (20) in the top hole and secure with the lynch pin.
11. Install light antler (7) and light braces (3) using ½" x 1 1/2" bolts (10), ½" lockwashers (11), and ½" hex nuts (12). Install lights so that the light mounting stud goes through both the antler (7) and the light brace (3). Tighten all light mounting hardware.

12. Install lift channel (6) and front mounting pump (from hydraulic kit) to lift frame (1a)(1b) using 3/4" x 3 1/2" bolts (14), and 3/4" locknuts (13). Use 3/4" x 2 1/2" bolt (15) and 3/4" locknut (13) to attach lift channel (6) to front mount pump (or lift cylinder). *Do not over tighten as this assembly must be able to pivot.*
13. Use 1/4"x1" bolt (22), 1/4" flat washer (24), 1/4" lock washer (23) and 1/4" hex nut (25) to fasten blade guides to blade.
14. Return any unused items to the customer so that the vehicle can be returned to its original condition if the snowplow is removed.
15. See separate installation instructions for the hydraulic pump and headlight kit.

TORQUE CHART (FT. L.B.)		
SIZE	GRADE 5 BOLT 	GRADE 8 BOLT 
1/4 - 28	8	11
5/16 - 24	15	22
3/8 - 24	28	40
7/16 - 20	44	63
1/2 - 20	69	97
5/8 - 18	138	195
3/4 - 16	241	341
<i>Note:</i> Torque values are for plated bolts only		

